

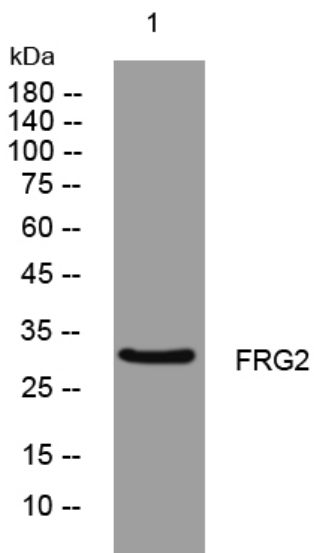


## FRG2 rabbit pAb

<b>Catalog No</b>	YP-Ab-08537
<b>Isotype</b>	IgG
<b>Reactivity</b>	Human;Rat;Mouse;
<b>Applications</b>	WB
<b>Gene Name</b>	FRG2 FRG2A
<b>Protein Name</b>	FRG2
<b>Immunogen</b>	Synthesized peptide derived from human FRG2 AA range: 104-154
<b>Specificity</b>	This antibody detects endogenous levels of FRG2 at Human
<b>Formulation</b>	Liquid in PBS containing 50% glycerol, 0.5% BSA and 0.02% sodium azide.
<b>Source</b>	Polyclonal, Rabbit,IgG
<b>Purification</b>	The antibody was affinity-purified from rabbit serum by affinity-chromatography using specific immunogen.
<b>Dilution</b>	WB 1: 500-2000
<b>Concentration</b>	1 mg/ml
<b>Purity</b>	≥90%
<b>Storage Stability</b>	-20°C/1 year
<b>Synonyms</b>	
<b>Observed Band</b>	
<b>Cell Pathway</b>	Nucleus .
<b>Tissue Specificity</b>	Expression is undetectable in all tissues tested except for differentiating myoblasts of FSHD patients, which display low, yet distinct levels of expression, partly from FRG2, but predominantly originating from its homolog on chromosome 10.
<b>Function</b>	similarity:Belongs to the FRG2 family.,tissue specificity:Expression is undetectable in all tissues tested except for differentiating myoblasts of FSHD patients, which display low, yet distinct levels of expression, partly from FRG2, but predominantly originating from its homolog on chromosome 10.,
<b>Background</b>	
<b>matters needing attention</b>	Avoid repeated freezing and thawing!
<b>Usage suggestions</b>	This product can be used in immunological reaction related experiments. For more information, please consult technical personnel.



## Products Images



Western blot analysis of lysates from HCT116 cells,  
primary antibody was diluted at 1:1000, 4° over night