

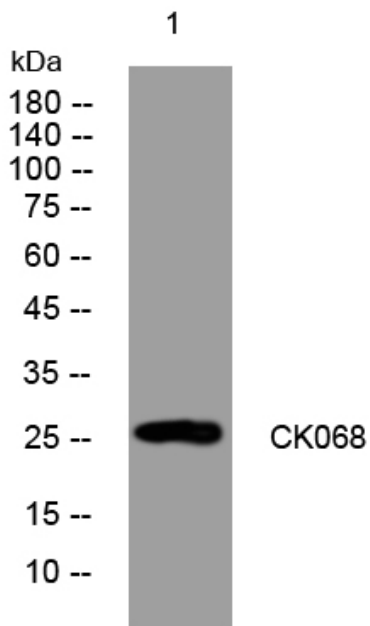


CK068 rabbit pAb

Catalog No	YP-Ab-08545
Isotype	IgG
Reactivity	Human; Mouse;Rat
Applications	WB
Gene Name	C11orf68 BLES03
Protein Name	CK068
Immunogen	Synthesized peptide derived from human CK068 AA range: 151-201
Specificity	This antibody detects endogenous levels of CK068 at Human/Mouse/Rat
Formulation	Liquid in PBS containing 50% glycerol, 0.5% BSA and 0.02% sodium azide.
Source	Polyclonal, Rabbit,IgG
Purification	The antibody was affinity-purified from rabbit serum by affinity-chromatography using specific immunogen.
Dilution	WB 1: 500-2000
Concentration	1 mg/ml
Purity	≥90%
Storage Stability	-20°C/1 year
Synonyms	
Observed Band	
Cell Pathway	
Tissue Specificity	
Function	similarity:Belongs to the UPF0696 family.,
Background	
matters needing attention	Avoid repeated freezing and thawing!
Usage suggestions	This product can be used in immunological reaction related experiments. For more information, please consult technical personnel.



Products Images



Western blot analysis of lysates from KB cells, primary antibody was diluted at 1:1000, 4° over night