

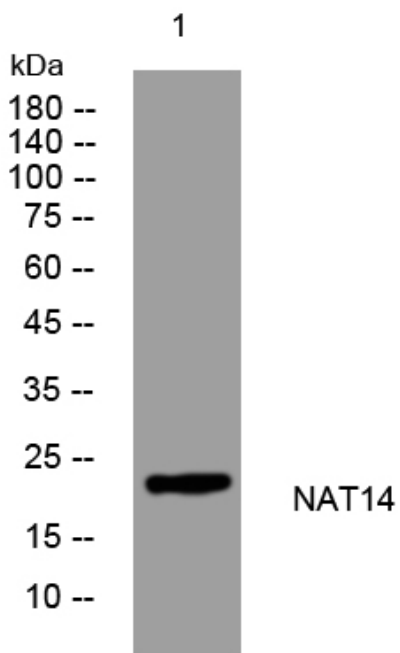


NAT14 rabbit pAb

Catalog No	YP-Ab-08554
Isotype	IgG
Reactivity	Human; Mouse
Applications	WB
Gene Name	NAT14 KLP1
Protein Name	NAT14
Immunogen	Synthesized peptide derived from human NAT14 AA range: 96-146
Specificity	This antibody detects endogenous levels of NAT14 at Human/Mouse
Formulation	Liquid in PBS containing 50% glycerol, 0.5% BSA and 0.02% sodium azide.
Source	Polyclonal, Rabbit,IgG
Purification	The antibody was affinity-purified from rabbit serum by affinity-chromatography using specific immunogen.
Dilution	WB 1: 500-2000
Concentration	1 mg/ml
Purity	≥90%
Storage Stability	-20°C/1 year
Synonyms	
Observed Band	
Cell Pathway	Membrane ; Single-pass membrane protein .
Tissue Specificity	Expressed in K-562 and HeLa cell lines and in brain.
Function	function:Probable acetyltransferase that binds the 5'-GGACTACAG-3' sequence of coproporphyrinogen oxidase promoter. Able to activate transcription of a reporter construct in vitro.,similarity:Belongs to the camello family.,similarity:Contains 1 N-acetyltransferase domain.,tissue specificity:Expressed in K562 cells, HeLa cells and brain.,
Background	
matters needing attention	Avoid repeated freezing and thawing!
Usage suggestions	This product can be used in immunological reaction related experiments. For more information, please consult technical personnel.



Products Images



Western blot analysis of lysates from MCF-7 cells,
primary antibody was diluted at 1:1000, 4° over night