



DHX16 rabbit pAb

Catalog No	YP-Ab-08559
Isotype	IgG
Reactivity	Human;Rat;Mouse;
Applications	WB
Gene Name	DHX16 DBP2 DDX16 KIAA0577
Protein Name	DHX16
Immunogen	Synthesized peptide derived from human DHX16 AA range: 216-266
Specificity	This antibody detects endogenous levels of DHX16 at Human
Formulation	Liquid in PBS containing 50% glycerol, 0.5% BSA and 0.02% sodium azide.
Source	Polyclonal, Rabbit,IgG
Purification	The antibody was affinity-purified from rabbit serum by affinity-chromatography using specific immunogen.
Dilution	WB 1: 500-2000
Concentration	1 mg/ml
Purity	≥90%
Storage Stability	-20°C/1 year
Synonyms	
Observed Band	
Cell Pathway	Nucleus . Nucleus, nucleoplasm .
Tissue Specificity	Expressed in the spleen, thyroid and testis. Also expressed in the brain and cerebellum.
Function	function:Probable ATP-binding RNA helicase involved in pre-mRNA splicing.,similarity:Belongs to the DEAD box helicase family. DEAH subfamily. DDX16/PRP8 sub-subfamily.,similarity:Contains 1 helicase ATP-binding domain.,similarity:Contains 1 helicase C-terminal domain.,
Background	DEAD box proteins, characterized by the conserved motif Asp-Glu-Ala-Asp (DEAD), are putative RNA helicases. They are implicated in a number of cellular processes involving alteration of RNA secondary structure such as translation initiation, nuclear and mitochondrial splicing, and ribosome and spliceosome assembly. Based on their distribution patterns, some members of this family are believed to be involved in embryogenesis, spermatogenesis, and cellular growth and division. This gene encodes a DEAD box protein, which is a functional homolog of fission yeast Prp8 protein involved in cell cycle progression. This gene is mapped to the MHC region on chromosome 6p21.3, a region where many malignant, genetic and autoimmune disease genes are linked. Two transcript variants encoding different isoforms have been found for this gene. [provided by



RefSeq, Aug 2009],

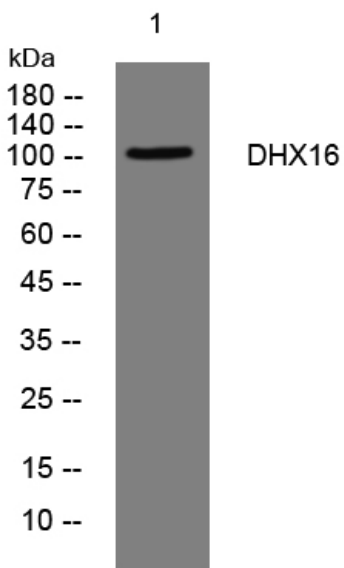
matters needing attention

Avoid repeated freezing and thawing!

Usage suggestions

This product can be used in immunological reaction related experiments. For more information, please consult technical personnel.

Products Images



Western blot analysis of lysates from HeLa cells,
primary antibody was diluted at 1:1000, 4° over night