



# UBP20 rabbit pAb

|                           |   |
|---------------------------|---|
| <b>Catalog No</b>         | YP-Ab-08631   |
| <b>Isotype</b>            | IgG   |
| <b>Reactivity</b>         | Human; Mouse  |
| <b>Applications</b>       | WB  |
| <b>Gene Name</b>          | USP20 KIAA1003 LSFR3A VDU2  |
| <b>Protein Name</b>       | UBP20   |
| <b>Immunogen</b>          | Synthesized peptide derived from human UB20 AA range: 104-154   |
| <b>Specificity</b>        | This antibody detects endogenous levels of UB20 at Human/Mouse  |
| <b>Formulation</b>        | Liquid in PBS containing 50% glycerol, 0.5% BSA and 0.02% sodium azide.   |
| <b>Source</b>             | Polyclonal, Rabbit,IgG  |
| <b>Purification</b>       | The antibody was affinity-purified from rabbit serum by affinity-chromatography using specific immunogen.   |
| <b>Dilution</b>           | WB 1: 500-2000  |
| <b>Concentration</b>      | 1 mg/ml   |
| <b>Purity</b>             | ≥90%  |
| <b>Storage Stability</b>  | -20°C/1 year  |
| <b>Synonyms</b>           |   |
| <b>Observed Band</b>      |   |
| <b>Cell Pathway</b>       | Cytoplasm, perinuclear region . Cytoplasm, cytoskeleton, microtubule organizing center, centrosome . According to PubMed:12865408, it localizes in the endoplasmic reticulum; however the relevance of such result is unclear.  |
| <b>Tissue Specificity</b> |   |
| <b>Function</b>           | catalytic activity:Ubiquitin C-terminal thioester + H(2)O = ubiquitin + a thiol.,similarity:Belongs to the peptidase C19 family.,similarity:Contains 1 UB20-type zinc finger.,similarity:Contains 2 DUSP domains.,  |
| <b>Background</b>         | This gene encodes a ubiquitin specific processing protease that was first identified as a substrate of the VHL (von Hippel-Lindau disease) protein E3 ubiquitin ligase complex. In addition to being ubiquitinated by the VHL-E3 ligase complex, this enzyme deubiquitinates hypoxia-inducible factor (HIF)-1 alpha and thereby causes increased expression of HIF-1alpha targeted genes which play a role in angiogenesis, glucose metabolism, cell proliferation and metastasis. The enzyme encoded by this gene also regulates G-protein coupled receptor signaling by mediating the deubiquitination of beta-2 adrenergic receptor (ADRB2). This enzyme is a ubiquitously expressed thiolester hydrolase. Alternative splicing results in multiple transcript variants encoding the same protein. [provided by RefSeq, Jan 2013], |



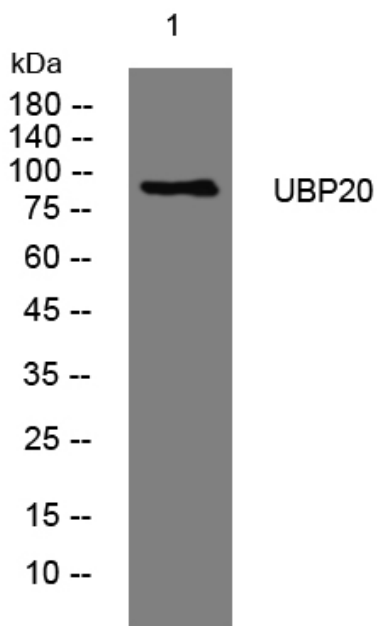
**matters needing attention**

Avoid repeated freezing and thawing!

**Usage suggestions**

This product can be used in immunological reaction related experiments. For more information, please consult technical personnel.

## Products Images



Western blot analysis of lysates from SW480 cells, primary antibody was diluted at 1:1000, 4° over night