

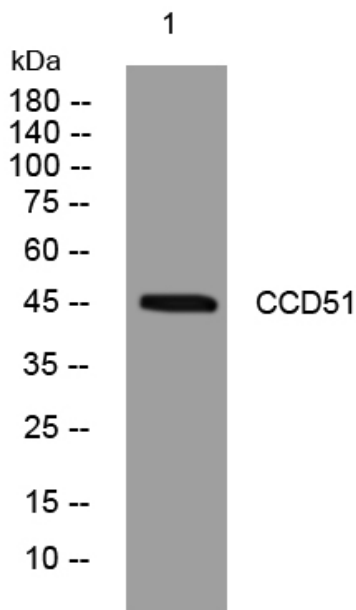


CCD51 rabbit pAb

Catalog No	YP-Ab-08633
Isotype	IgG
Reactivity	Human; Mouse;Rat
Applications	WB
Gene Name	CCDC51
Protein Name	CCD51
Immunogen	Synthesized peptide derived from human CCD51 AA range: 357-407
Specificity	This antibody detects endogenous levels of CCD51 at Human/Mouse/Rat
Formulation	Liquid in PBS containing 50% glycerol, 0.5% BSA and 0.02% sodium azide.
Source	Polyclonal, Rabbit,IgG
Purification	The antibody was affinity-purified from rabbit serum by affinity-chromatography using specific immunogen.
Dilution	WB 1: 500-2000
Concentration	1 mg/ml
Purity	≥90%
Storage Stability	-20°C/1 year
Synonyms	
Observed Band	
Cell Pathway	Mitochondrion inner membrane ; Multi-pass membrane protein .; [Isoform 1]: Mitochondrion inner membrane ; Multi-pass membrane protein .
Tissue Specificity	Isoform 1: Widely expressed (PubMed:31435016). Isoform 2: Expression is barely detectable (PubMed:31435016).
Function	
Background	
matters needing attention	Avoid repeated freezing and thawing!
Usage suggestions	This product can be used in immunological reaction related experiments. For more information, please consult technical personnel.



Products Images



Western blot analysis of lysates from Jarkat cells,
primary antibody was diluted at 1:1000, 4° over night