



## PDE6D rabbit pAb

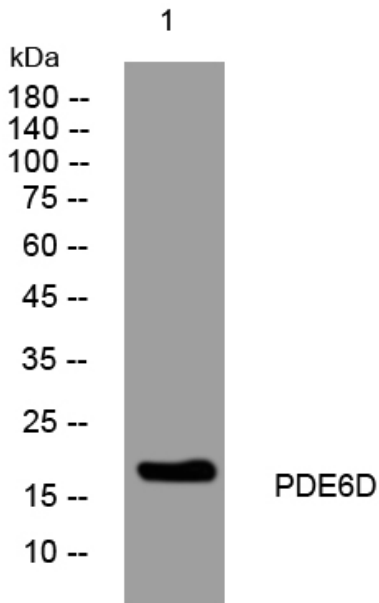
<b>Catalog No</b>	YP-Ab-08659
<b>Isotype</b>	IgG
<b>Reactivity</b>	Human; Mouse
<b>Applications</b>	WB
<b>Gene Name</b>	PDE6D PDED
<b>Protein Name</b>	PDE6D
<b>Immunogen</b>	Synthesized peptide derived from human PDE6D AA range: 89-139
<b>Specificity</b>	This antibody detects endogenous levels of PDE6D at Human/Mouse
<b>Formulation</b>	Liquid in PBS containing 50% glycerol, 0.5% BSA and 0.02% sodium azide.
<b>Source</b>	Polyclonal, Rabbit,IgG
<b>Purification</b>	The antibody was affinity-purified from rabbit serum by affinity-chromatography using specific immunogen.
<b>Dilution</b>	WB 1: 500-2000
<b>Concentration</b>	1 mg/ml
<b>Purity</b>	≥90%
<b>Storage Stability</b>	-20°C/1 year
<b>Synonyms</b>	
<b>Observed Band</b>	
<b>Cell Pathway</b>	Cytoplasm, cytosol . Cytoplasmic vesicle membrane ; Peripheral membrane protein . Cytoplasm, cytoskeleton, cilium basal body .
<b>Tissue Specificity</b>	Widely expressed. Detected in various tissues including spleen, prostate gland, testis, ovary, small intestine, colon, retina, and peripheral blood.
<b>Function</b>	similarity:Belongs to the PDE6D/unc-119 family.,subunit:Oligomer composed of two catalytic chains (alpha and beta), an inhibitory chain (gamma) and the delta chain. Interacts with RPGR, ARL2 and ARL3.,tissue specificity:Retina.,
<b>Background</b>	This gene encodes the delta subunit of rod-specific photoreceptor phosphodiesterase (PDE), a key enzyme in the phototransduction cascade. A similar protein in cow functions in solubilizing membrane-bound PDE. In addition to its role in the PDE complex, the encoded protein is thought to bind to prenyl groups of proteins to target them to subcellular organelles called cilia. Mutations in this gene are associated with Joubert syndrome-22. Alternative splicing results in multiple splice variants. [provided by RefSeq, Mar 2014],
<b>matters needing attention</b>	Avoid repeated freezing and thawing!



**Usage suggestions**

This product can be used in immunological reaction related experiments. For more information, please consult technical personnel.

**Products Images**



Western blot analysis of lysates from HeLa cells, primary antibody was diluted at 1:1000, 4° over night