



# AKIR2 rabbit pAb

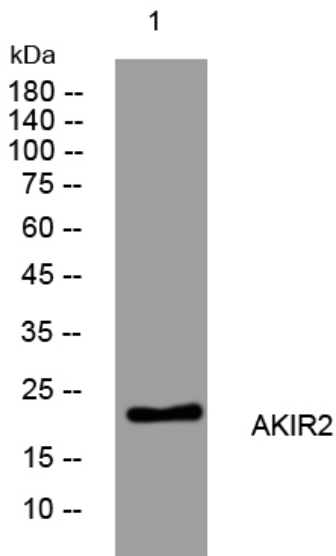
<b>Catalog No</b>	YP-Ab-08661
<b>Isotype</b>	IgG
<b>Reactivity</b>	Human; Mouse;Rat
<b>Applications</b>	WB
<b>Gene Name</b>	AKIRIN2 C6orf166
<b>Protein Name</b>	AKIR2
<b>Immunogen</b>	Synthesized peptide derived from human AKIR2 AA range: 14-64
<b>Specificity</b>	This antibody detects endogenous levels of AKIR2 at Human/Mouse/Rat
<b>Formulation</b>	Liquid in PBS containing 50% glycerol, 0.5% BSA and 0.02% sodium azide.
<b>Source</b>	Polyclonal, Rabbit,IgG
<b>Purification</b>	The antibody was affinity-purified from rabbit serum by affinity-chromatography using specific immunogen.
<b>Dilution</b>	WB 1: 500-2000
<b>Concentration</b>	1 mg/ml
<b>Purity</b>	≥90%
<b>Storage Stability</b>	-20°C/1 year
<b>Synonyms</b>	
<b>Observed Band</b>	
<b>Cell Pathway</b>	Nucleus . Cytoplasm . Membrane . Present mainly in the nuclear fraction, and at much lower level in the cytoplasmic and membrane fractions. .
<b>Tissue Specificity</b>	Widely expressed with the highest expression in peripheral blood leukocytes.
<b>Function</b>	function:Required for the innate immune response. Downstream effector of the Toll-like receptor (TLR), TNF and IL-1 beta signaling pathways leading to the production of IL-6. Forms a complex with YWHAB that acts to repress transcription of DUSP1.,miscellaneous:'Akiraka ni suru' means 'making things clear' in Japanese. The name is given based on the presence of the clear nuclear localization signal.,similarity:Belongs to the akirin family.,subunit:Interacts with YWHAB.,tissue specificity:Widely expressed with the highest expression in peripheral blood leukocytes.,
<b>Background</b>	
<b>matters needing attention</b>	Avoid repeated freezing and thawing!



**Usage suggestions**

This product can be used in immunological reaction related experiments. For more information, please consult technical personnel.

**Products Images**



Western blot analysis of lysates from U2OS cells, primary antibody was diluted at 1:1000, 4° over night