



TFG rabbit pAb

Catalog No	YP-Ab-08683
Isotype	IgG
Reactivity	Human;Rat;Mouse;
Applications	WB
Gene Name	TFG
Protein Name	TFG
Immunogen	Synthesized peptide derived from human TFG AA range: 127-177
Specificity	This antibody detects endogenous levels of TFG at Human
Formulation	Liquid in PBS containing 50% glycerol, 0.5% BSA and 0.02% sodium azide.
Source	Polyclonal, Rabbit,IgG
Purification	The antibody was affinity-purified from rabbit serum by affinity-chromatography using specific immunogen.
Dilution	WB 1: 500-2000
Concentration	1 mg/ml
Purity	≥90%
Storage Stability	-20°C/1 year
Synonyms	
Observed Band	
Cell Pathway	Endoplasmic reticulum . Localizes to endoplasmic reticulum exit site (ERES), also known as transitional endoplasmic reticulum (tER) (PubMed:27813252, PubMed:21478858). .
Tissue Specificity	Ubiquitous.
Function	catalytic activity:ATP + a [protein]-L-tyrosine = ADP + a [protein]-L-tyrosine phosphate.,disease:A chromosomal aberration involving TFG may be a cause of thyroid papillary carcinoma (PACT) [MIM:188550]. Translocation t(1;3)(q21;q11) with NTRK1. The TFG sequence is fused to the 3'-end of NTRK1 generating the TRKT3 (TRK-T3) fusion transcript.,similarity:Belongs to the protein kinase superfamily. Tyr protein kinase family.,similarity:Belongs to the protein kinase superfamily. Tyr protein kinase family. Insulin receptor subfamily.,similarity:Contains 1 protein kinase domain.,tissue specificity:Ubiquitous.,
Background	There are several documented fusion oncoproteins encoded partially by this gene. This gene also participates in several oncogenic rearrangements resulting in anaplastic lymphoma and mixoid chondrosarcoma, and may play a role in the NF-kappaB pathway. Multiple transcript variants have been found for this gene. [provided by RefSeq, Sep 2010],



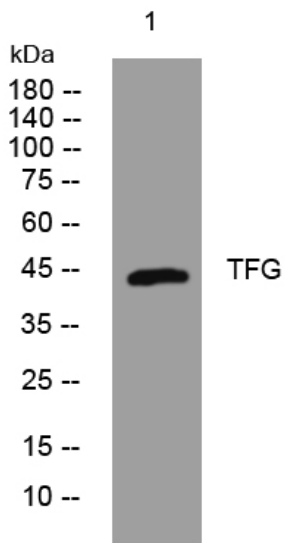
matters needing attention

Avoid repeated freezing and thawing!

Usage suggestions

This product can be used in immunological reaction related experiments. For more information, please consult technical personnel.

Products Images



Western blot analysis of lysates from KB cells, primary antibody was diluted at 1:1000, 4° over night