



MS4A3 rabbit pAb

Catalog No	YP-Ab-08699
Isotype	IgG
Reactivity	Human; Mouse
Applications	WB
Gene Name	MS4A3 CD20L HTM4
Protein Name	MS4A3
Immunogen	Synthesized peptide derived from human MS4A3 AA range: 101-151
Specificity	This antibody detects endogenous levels of MS4A3 at Human/Mouse
Formulation	Liquid in PBS containing 50% glycerol, 0.5% BSA and 0.02% sodium azide.
Source	Polyclonal, Rabbit,IgG
Purification	The antibody was affinity-purified from rabbit serum by affinity-chromatography using specific immunogen.
Dilution	WB 1: 500-2000
Concentration	1 mg/ml
Purity	≥90%
Storage Stability	-20°C/1 year
Synonyms	
Observed Band	
Cell Pathway	Endomembrane system ; Multi-pass membrane protein . Cytoplasm, perinuclear region . Located in the perinuclear area.
Tissue Specificity	Expressed specifically in hematopoietic cells and tissues.
Function	caution:The sequence shown here is derived from an Ensembl automatic analysis pipeline and should be considered as preliminary data.,domain:The C-terminal region is required for binding to CDKN3-CDK2 complexes and the modulation of CDKN3 activity.,function:Hematopoietic modulator for the G1-S cell cycle transition. Modulates the level of phosphorylation of cyclin-dependent kinase 2 (CDK2) through its direct binding to cyclin-dependent kinase inhibitor 3 (CDKN3/KAP).,similarity:Belongs to the MS4A family.,subcellular location:Located in the perinuclear area.,subunit:Interacts with CDKN3. Interacts with CDKN3-CDK2 complexes through its binding to CDKN3; this interaction facilitates dissociation of cyclin A from CDKN3-CDK2 complexes.,tissue specificity:Expressed specifically in hematopoietic cells and tissues.,
Background	This gene encodes a member of the membrane-spanning 4A gene family. Members of this protein family are characterized by common structural features and similar intron/exon splice boundaries and display unique expression patterns among hematopoietic cells and nonlymphoid tissues. This family member likely



plays a role in signal transduction and may function as a subunit associated with receptor complexes. The gene encoding this protein is localized to 11q12, among a cluster of related family members. Alternative splicing may result in multiple transcript variants; however, not all variants have been fully described. [provided by RefSeq, Jul 2008],

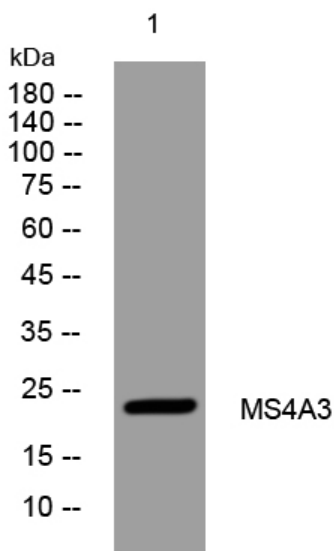
matters needing attention

Avoid repeated freezing and thawing!

Usage suggestions

This product can be used in immunological reaction related experiments. For more information, please consult technical personnel.

Products Images



Western blot analysis of lysates from KB cells, primary antibody was diluted at 1:1000, 4°over night