

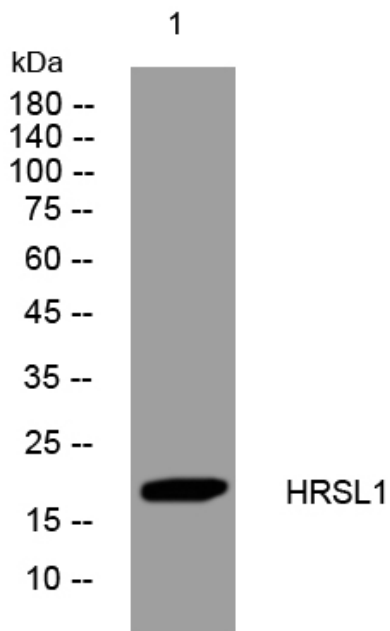


HRSL1 rabbit pAb

Catalog No	YP-Ab-08732
Isotype	IgG
Reactivity	Human; Mouse
Applications	WB
Gene Name	HRASLS
Protein Name	HRSL1
Immunogen	Synthesized peptide derived from human HRSL1 AA range: 50-100
Specificity	This antibody detects endogenous levels of HRSL1 at Human/Mouse
Formulation	Liquid in PBS containing 50% glycerol, 0.5% BSA and 0.02% sodium azide.
Source	Polyclonal, Rabbit,IgG
Purification	The antibody was affinity-purified from rabbit serum by affinity-chromatography using specific immunogen.
Dilution	WB 1: 500-2000
Concentration	1 mg/ml
Purity	≥90%
Storage Stability	-20°C/1 year
Synonyms	
Observed Band	
Cell Pathway	[Isoform 1]: Membrane ; Single-pass membrane protein . Cytoplasm . ; [Isoform 2]: Nucleus . Cytoplasm .
Tissue Specificity	[Isoform 1]: Abundantly expressed in testis, skeletal muscle, brain, and heart. ; [Isoform 2]: Highly expressed in the testis, skeletal muscle, brain, heart, and thyroid.
Function	similarity:Belongs to the H-rev107 family.,
Background	
matters needing attention	Avoid repeated freezing and thawing!
Usage suggestions	This product can be used in immunological reaction related experiments. For more information, please consult technical personnel.



Products Images



Western blot analysis of lysates from 293T cells,
primary antibody was diluted at 1:1000, 4° over night