



PSMD5 rabbit pAb

Catalog No	YP-Ab-08745
Isotype	IgG
Reactivity	Human; Mouse
Applications	WB
Gene Name	PSMD5 KIAA0072
Protein Name	PSMD5
Immunogen	Synthesized peptide derived from human PSMD5 AA range: 424-474
Specificity	This antibody detects endogenous levels of PSMD5 at Human/Mouse
Formulation	Liquid in PBS containing 50% glycerol, 0.5% BSA and 0.02% sodium azide.
Source	Polyclonal, Rabbit,IgG
Purification	The antibody was affinity-purified from rabbit serum by affinity-chromatography using specific immunogen.
Dilution	WB 1: 500-2000
Concentration	1 mg/ml
Purity	≥90%
Storage Stability	-20°C/1 year
Synonyms	
Observed Band	
Cell Pathway	proteasome complex,nucleoplasm,cytosol,proteasome regulatory particle, base subcomplex,proteasome accessory complex,
Tissue Specificity	
Function	domain:Rich in dileucine repeats, which have been implicated in trafficking of a variety of transmembrane proteins.,function:Belongs to the 26S multisubunit protease, which is required for ubiquitin-dependent proteolysis. Does not bind ubiquitin polymers.,similarity:Belongs to the proteasome subunit S5B family.,subunit:26S protease is composed of a multicatalytic protease (proteasome) and a regulatory ATPase complex. Both are multisubunit structures that associate in the presence of ATP to form the protease. Subunit S5B is part of the regulatory complex.,
Background	The 26S proteasome is a multicatalytic proteinase complex with a highly ordered structure composed of 2 complexes, a 20S core and a 19S regulator. The 20S core is composed of 4 rings of 28 non-identical subunits; 2 rings are composed of 7 alpha subunits and 2 rings are composed of 7 beta subunits. The 19S regulator is composed of a base, which contains 6 ATPase subunits and 2 non-ATPase subunits, and a lid, which contains up to 10 non-ATPase subunits. Proteasomes are distributed throughout eukaryotic cells at a high concentration and cleave



peptides in an ATP/ubiquitin-dependent process in a non-lysosomal pathway. This gene encodes a non-ATPase subunit of the 19S regulator base that functions as a chaperone protein during 26S proteasome assembly. [provided by RefSeq, Jul 2012],

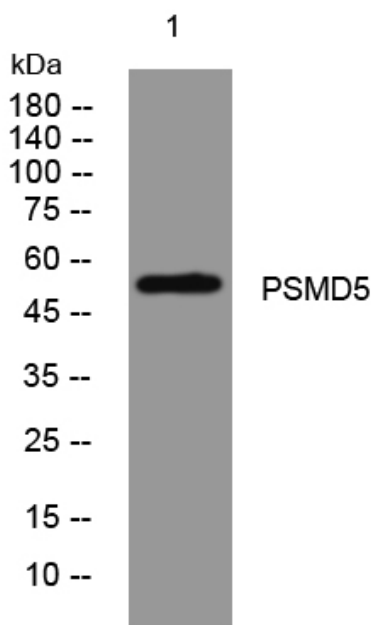
matters needing attention

Avoid repeated freezing and thawing!

Usage suggestions

This product can be used in immunological reaction related experiments. For more information, please consult technical personnel.

Products Images



Western blot analysis of lysates from U2OS cells, primary antibody was diluted at 1:1000, 4° over night