



# SPY1 rabbit pAb

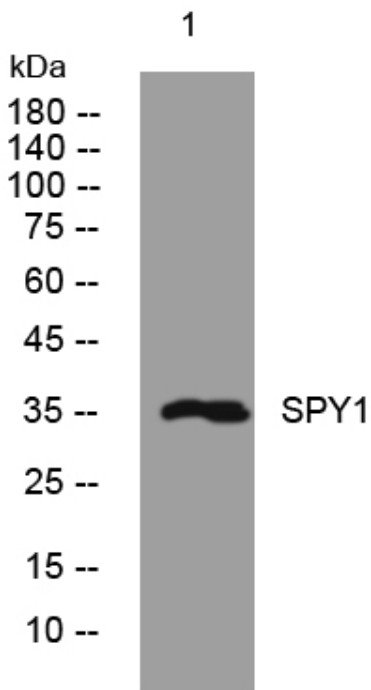
<b>Catalog No</b>	YP-Ab-08747
<b>Isotype</b>	IgG
<b>Reactivity</b>	Human; Mouse
<b>Applications</b>	IF, WB, CoIP
<b>Gene Name</b>	SPRY1
<b>Protein Name</b>	SPY1
<b>Immunogen</b>	Synthesized peptide derived from human SPY1 AA range: 129-179
<b>Specificity</b>	This antibody detects endogenous levels of SPY1 at Human/Mouse
<b>Formulation</b>	Liquid in PBS containing 50% glycerol, 0.5% BSA and 0.02% sodium azide.
<b>Source</b>	Polyclonal, Rabbit, IgG
<b>Purification</b>	The antibody was affinity-purified from rabbit serum by affinity-chromatography using specific immunogen.
<b>Dilution</b>	WB 1: 500-2000, IP 1: 50-100
<b>Concentration</b>	1 mg/ml
<b>Purity</b>	≥90%
<b>Storage Stability</b>	-20°C/1 year
<b>Synonyms</b>	
<b>Observed Band</b>	
<b>Cell Pathway</b>	Cytoplasm. Membrane; Peripheral membrane protein. Found in the cytoplasm in unstimulated cells but is translocated to the membrane ruffles in cells stimulated with EGF (epidermal growth factor).
<b>Tissue Specificity</b>	
<b>Function</b>	domain: The Cys-rich domain is responsible for the localization of the protein to the membrane ruffles., function: May function as an antagonist of fibroblast growth factor (FGF) pathways and may negatively modulate respiratory organogenesis., induction: By FGF signaling., similarity: Belongs to the sprouty family., similarity: Contains 1 SPR (sprouty) domain., subcellular location: Found in the cytoplasm in unstimulated cells but is translocated to the membrane ruffles in cells stimulated with EGF (epidermal growth factor).,
<b>Background</b>	
<b>matters needing attention</b>	Avoid repeated freezing and thawing!



**Usage suggestions**

This product can be used in immunological reaction related experiments. For more information, please consult technical personnel.

**Products Images**



Western blot analysis of lysates from HEK293 cells, primary antibody was diluted at 1:1000, 4° over night