



STRAB rabbit pAb

Catalog No	YP-Ab-08761
Isotype	IgG
Reactivity	Human; Mouse
Applications	WB
Gene Name	STRADB ALS2CR2 ILPIP PRO1038
Protein Name	STRAB
Immunogen	Synthesized peptide derived from human STRAB AA range: 313-363
Specificity	This antibody detects endogenous levels of STRAB at Human/Mouse
Formulation	Liquid in PBS containing 50% glycerol, 0.5% BSA and 0.02% sodium azide.
Source	Polyclonal, Rabbit,IgG
Purification	The antibody was affinity-purified from rabbit serum by affinity-chromatography using specific immunogen.
Dilution	WB 1: 500-2000
Concentration	1 mg/ml
Purity	≥90%
Storage Stability	-20°C/1 year
Synonyms	
Observed Band	
Cell Pathway	Nucleus . Cytoplasm .
Tissue Specificity	Highly expressed in heart, skeletal muscle, testis, liver and colon.
Function	caution:Ser-184 is present instead of the conserved Asp which is expected to be an active site residue.,domain:The protein kinase domain is predicted to be catalytically inactive.,function:Pseudokinase which, in complex with CAB39, binds to and activates STK11. Relocates STK11 from the nucleus to the cytoplasm. Plays an essential role in STK11-mediated G1 cell cycle arrest.,similarity:Belongs to the protein kinase superfamily. STE Ser/Thr protein kinase family. STE20 subfamily.,similarity:Contains 1 protein kinase domain.,subunit:Interacts with BIRC4/XIAP. These two proteins are likely to coexist in a complex with TAK1, TRAF6, TAB1 and TAB2.,tissue specificity:Highly expressed in heart, skeletal muscle, testis, liver and colon.,
Background	This gene encodes a protein that belongs to the serine/threonine protein kinase STE20 subfamily. One of the active site residues in the protein kinase domain of this protein is altered, and it is thus a pseudokinase. This protein is a component of a complex involved in the activation of serine/threonine kinase 11, a master kinase that regulates cell polarity and energy-generating metabolism. This



complex regulates the relocation of this kinase from the nucleus to the cytoplasm, and it is essential for G1 cell cycle arrest mediated by this kinase. The protein encoded by this gene can also interact with the X chromosome-linked inhibitor of apoptosis protein, and this interaction enhances the anti-apoptotic activity of this protein via the JNK1 signal transduction pathway. Two pseudogenes, located on chromosomes 1 and 7, have been found for this gene. Alternatively spliced transcript variants encoding different isoforms have been found for this gene. [provided by RefSeq, May 2011],

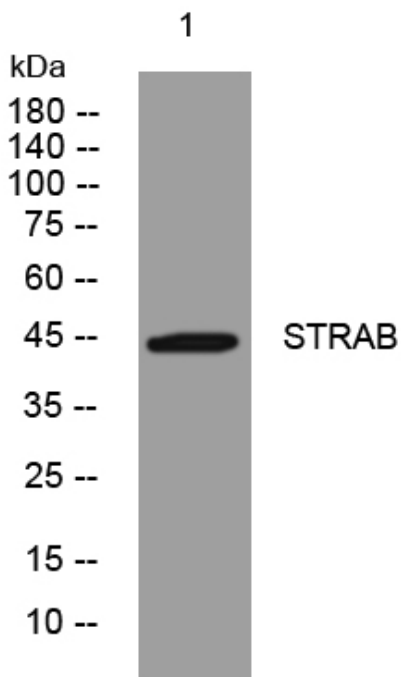
matters needing attention

Avoid repeated freezing and thawing!

Usage suggestions

This product can be used in immunological reaction related experiments. For more information, please consult technical personnel.

Products Images



Western blot analysis of lysates from HpeG2 cells, primary antibody was diluted at 1:1000, 4° over night