



SC5AC rabbit pAb

Catalog No	YP-Ab-08768
Isotype	IgG
Reactivity	Human; Mouse
Applications	WB
Gene Name	SLC5A12 SMCT2
Protein Name	SC5AC
Immunogen	Synthesized peptide derived from human SC5AC AA range: 84-134
Specificity	This antibody detects endogenous levels of SC5AC at Human/Mouse
Formulation	Liquid in PBS containing 50% glycerol, 0.5% BSA and 0.02% sodium azide.
Source	Polyclonal, Rabbit,IgG
Purification	The antibody was affinity-purified from rabbit serum by affinity-chromatography using specific immunogen.
Dilution	WB 1: 500-2000
Concentration	1 mg/ml
Purity	≥90%
Storage Stability	-20°C/1 year
Synonyms	
Observed Band	
Cell Pathway	Apical cell membrane ; Multi-pass membrane protein . Detected at the brush border membrane of the kidney. Colocalizes with viementin in Mueller cells (By similarity). .
Tissue Specificity	
Function	function:Acts as an electroneutral and low-affinity sodium (Na(+))-dependent sodium-coupled solute transporter. Catalyzes the transport across the plasma membrane of many monocarboxylates such as lactate, pyruvate, nicotinate, propionate, butyrate and beta-D-hydroxybutyrate. May be responsible for the first step of reabsorption of monocarboxylates from the lumen of the proximal tubule of the kidney and the small intestine. May play also a role in monocarboxylates transport in the retina (By similarity). Mediates electroneutral uptake of lactate, with a stoichiometry of 2 Na(+) for each lactate.,miscellaneous:Cotransport of monocarboxylates and nicotinate strongly inhibited by ibuprofen, fenoprofen and ketoprofen.,similarity:Belongs to the sodium:solute symporter (SSF) (TC 2.A.21) family.,subcellular location:Detected at the brush border membrane of the kidney. Colocalizes with viementin
Background	Normal blood lactate is maintained at about 1.5 mM, and little filtered lactate is excreted in urine. Reabsorption of lactate is mediated by the low-affinity



Na(+)-coupled lactate transporter SLC5A12 in the initial part of the proximal tubule and by the high-affinity Na(+)-coupled lactate transporter SLC5A8 (MIM 608044) in the distal proximal tubule (Gopal et al., 2007 [PubMed 17692818]).[supplied by OMIM, Dec 2008],

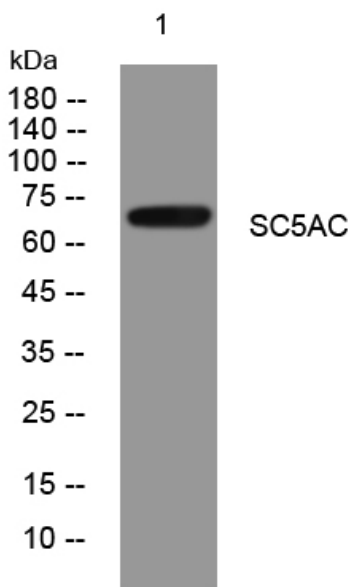
matters needing attention

Avoid repeated freezing and thawing!

Usage suggestions

This product can be used in immunological reaction related experiments. For more information, please consult technical personnel.

Products Images



Western blot analysis of lysates from U2OS cells, primary antibody was diluted at 1:1000, 4° over night