



TTC5 rabbit pAb

Catalog No	YP-Ab-08777
Isotype	IgG
Reactivity	Human; Mouse;Rat
Applications	WB
Gene Name	TTC5
Protein Name	TTC5
Immunogen	Synthesized peptide derived from human TTC5 AA range: 82-132
Specificity	This antibody detects endogenous levels of TTC5 at Human/Mouse/Rat
Formulation	Liquid in PBS containing 50% glycerol, 0.5% BSA and 0.02% sodium azide.
Source	Polyclonal, Rabbit,IgG
Purification	The antibody was affinity-purified from rabbit serum by affinity-chromatography using specific immunogen.
Dilution	WB 1: 500-2000
Concentration	1 mg/ml
Purity	≥90%
Storage Stability	-20°C/1 year
Synonyms	
Observed Band	
Cell Pathway	Nucleus . Cytoplasm . Cytoplasmic vesicle . Mitochondrion matrix . Phosphorylation at Ser-203 results in nuclear localization, while unphosphorylated protein localizes to the cytoplasm. Nuclear localization may be necessary for DNA damage-dependent stabilization of the protein. .
Tissue Specificity	
Function	function:Adapter protein involved in p53/TP53 response that acts by regulating and mediating the assembly of multi-protein complexes. Required to facilitate the interaction between JMY and p300/EP300 and increase p53/TP53-dependent transcription and apoptosis. Prevents p53/TP53 degradation by MDM2.,PTM:Phosphorylation at Ser-203 enhances protein stability, regulates nuclear accumulation and association with p300/EP300.,similarity:Contains 4 TPR repeats.,subcellular location:Phosphorylation at Ser-203 results in nuclear localization, while unphosphorylated protein localizes to the cytoplasm.,subunit:Interacts with JMY and p300/EP300.,
Background	



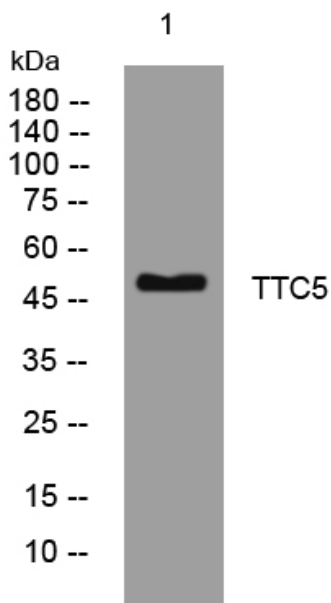
matters needing attention

Avoid repeated freezing and thawing!

Usage suggestions

This product can be used in immunological reaction related experiments. For more information, please consult technical personnel.

Products Images



Western blot analysis of lysates from A431 cells, primary antibody was diluted at 1:1000, 4°over night