



RBV1C rabbit pAb

| | |
|---------------------------|---|
| Catalog No | YP-Ab-08781 |
| Isotype | IgG |
| Reactivity | Human;Rat;Mouse; |
| Applications | WB |
| Gene Name | RBMY1C |
| Protein Name | RBV1C |
| Immunogen | Synthesized peptide derived from human RBV1C AA range: 321-371 |
| Specificity | This antibody detects endogenous levels of RBV1C at Human |
| Formulation | Liquid in PBS containing 50% glycerol, 0.5% BSA and 0.02% sodium azide. |
| Source | Polyclonal, Rabbit,IgG |
| Purification | The antibody was affinity-purified from rabbit serum by affinity-chromatography using specific immunogen. |
| Dilution | WB 1: 500-2000 |
| Concentration | 1 mg/ml |
| Purity | ≥90% |
| Storage Stability | -20°C/1 year |
| Synonyms | |
| Observed Band | |
| Cell Pathway | Nucleus . |
| Tissue Specificity | Testis-specific. |
| Function | developmental stage:Expressed in all of the transcriptionally active stages of germ cell development from spermatogonia through spermatocytes to round spermatids.,function:RNA-binding protein which may be involved in spermatogenesis. Required for sperm development, possibly by participating in pre-mRNA splicing in the testis.,miscellaneous:The RBMY1 proteins are encoded by strongly repeated regions of the Y chromosome, mostly within the AZFb region. The exact number of functional copies is unclear and may vary between individuals, and some of them may represent pseudogenes. The proteins are very similar, which gives their individual characterization difficult. Thus, most experiments do not discriminate between the different members. One can therefore suppose that reported interactions with a RBMY1 protein involve all the proteins.,similarity:Contains 1 RRM (RNA recognition motif) domain.,su |
| Background | |



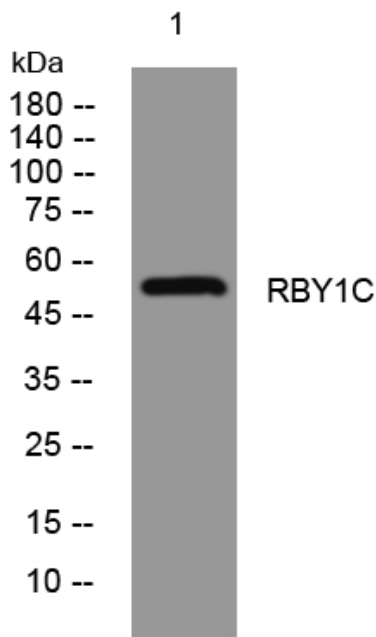
matters needing attention

Avoid repeated freezing and thawing!

Usage suggestions

This product can be used in immunological reaction related experiments. For more information, please consult technical personnel.

Products Images



Western blot analysis of lysates from VEC cells, primary antibody was diluted at 1:1000, 4° over night