

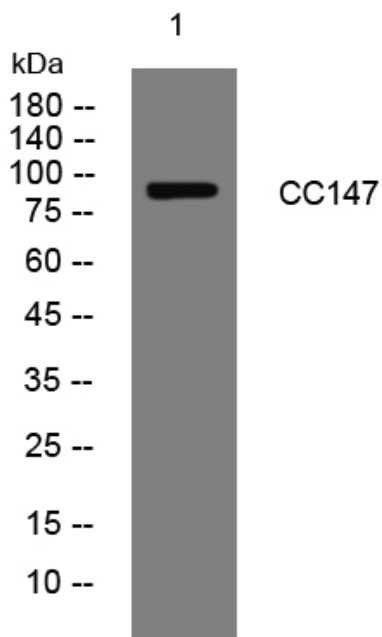


# CC147 rabbit pAb

<b>Catalog No</b>	YP-Ab-08794
<b>Isotype</b>	IgG
<b>Reactivity</b>	Human;Rat;Mouse;
<b>Applications</b>	WB
<b>Gene Name</b>	CCDC147 C10orf80
<b>Protein Name</b>	CC147
<b>Immunogen</b>	Synthesized peptide derived from human CC147 AA range: 723-773
<b>Specificity</b>	This antibody detects endogenous levels of CC147 at Human
<b>Formulation</b>	Liquid in PBS containing 50% glycerol, 0.5% BSA and 0.02% sodium azide.
<b>Source</b>	Polyclonal, Rabbit,IgG
<b>Purification</b>	The antibody was affinity-purified from rabbit serum by affinity-chromatography using specific immunogen.
<b>Dilution</b>	WB 1: 500-2000
<b>Concentration</b>	1 mg/ml
<b>Purity</b>	≥90%
<b>Storage Stability</b>	-20°C/1 year
<b>Synonyms</b>	
<b>Observed Band</b>	
<b>Cell Pathway</b>	Cell projection, cilium . Cell projection, cilium, flagellum . Cytoplasm, cytoskeleton, microtubule organizing center, centrosome . Localized to the entire flagellum and predominantly concentrated in the midpiece. Co-localizes with ODFP2 at the centrosome (By similarity). .
<b>Tissue Specificity</b>	
<b>Function</b>	similarity:Contains 3 LRR (leucine-rich) repeats.,
<b>Background</b>	
<b>matters needing attention</b>	Avoid repeated freezing and thawing!
<b>Usage suggestions</b>	This product can be used in immunological reaction related experiments. For more information, please consult technical personnel.



## Products Images



Western blot analysis of lysates from HCT116 cells,  
primary antibody was diluted at 1:1000, 4° over night