



CKAP2 rabbit pAb

Catalog No	YP-Ab-08817
Isotype	IgG
Reactivity	Human; Mouse
Applications	WB
Gene Name	CKAP2 LB1 TMAP
Protein Name	CKAP2
Immunogen	Synthesized peptide derived from human CKAP2 AA range: 298-348
Specificity	This antibody detects endogenous levels of CKAP2 at Human/Mouse
Formulation	Liquid in PBS containing 50% glycerol, 0.5% BSA and 0.02% sodium azide.
Source	Polyclonal, Rabbit,IgG
Purification	The antibody was affinity-purified from rabbit serum by affinity-chromatography using specific immunogen.
Dilution	WB 1: 500-2000
Concentration	1 mg/ml
Purity	≥90%
Storage Stability	-20°C/1 year
Synonyms	
Observed Band	
Cell Pathway	Cytoplasm, cytoskeleton. Cytoplasm, cytoskeleton, spindle. Cytoplasm, cytoskeleton, spindle pole. Contrary to the ectopically expressed protein, endogenous CKAP2 does not colocalize with microtubules in G1, S and early G2. At late G2 and prophase after separation of duplicated centrosomes, colocalizes with gamma-tubulin and centrosome-proximal microtubules. From prometaphase through anaphase B, colocalizes with mitotic spindle poles and spindle microtubules. During cytokinesis, absent from midbody microtubules.
Tissue Specificity	Abundant in testis, thymus, and in tumor derived cell lines, while barely detectable in liver, prostate, and kidney.
Function	developmental stage:Present at the G1/S boundary. Accumulates as cells progress from S to G2 into mitosis. Rapidly degraded during mitosis exit by CDH1-activated anaphase promoting complex/cyclosome (APC/C).,function:Possesses microtubule stabilizing properties. Involved in regulating aneuploidy, cell cycling, and cell death in a p53/TP53-dependent manner.,induction:Up-regulated in primary human gastric cancers.,sequence caution:Contaminating sequence. Potential poly-A sequence.,similarity:Belongs to the CKAP2 family.,subcellular location:Contrary to the ectopically expressed protein, endogenous CKAP2 does not colocalize with microtubules in G1, S and early G2. At late G2 and prophase after separation of duplicated centrosomes,



colocalizes with gamma-tubulin and centrosome-proximal microtubules. From prometaphase through anaphase B, colocalizes with mitotic spindle poles and spindle micr

Background

This gene encodes a cytoskeleton-associated protein that stabilizes microtubules and plays a role in the regulation of cell division. The encoded protein is itself regulated through phosphorylation at multiple serine and threonine residues. There is a pseudogene of this gene on chromosome 14. Alternative splicing results in multiple transcript variations. [provided by RefSeq, Nov 2013],

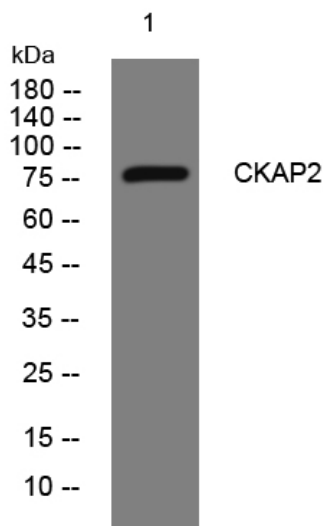
matters needing attention

Avoid repeated freezing and thawing!

Usage suggestions

This product can be used in immunological reaction related experiments. For more information, please consult technical personnel.

Products Images



Western blot analysis of lysates from VEC cells, primary antibody was diluted at 1:1000, 4° over night