



UBIP1 rabbit pAb

Catalog No	YP-Ab-08821
Isotype	IgG
Reactivity	Human; Mouse
Applications	WB
Gene Name	UBP1 LBP1
Protein Name	UBIP1
Immunogen	Synthesized peptide derived from human UBIP1 AA range: 264-314
Specificity	This antibody detects endogenous levels of UBIP1 at Human/Mouse
Formulation	Liquid in PBS containing 50% glycerol, 0.5% BSA and 0.02% sodium azide.
Source	Polyclonal, Rabbit,IgG
Purification	The antibody was affinity-purified from rabbit serum by affinity-chromatography using specific immunogen.
Dilution	WB 1: 500-2000
Concentration	1 mg/ml
Purity	≥90%
Storage Stability	-20°C/1 year
Synonyms	
Observed Band	
Cell Pathway	Nucleus .
Tissue Specificity	Expressed in adrenal tissue, JEG-3, NCI-H295A, Hep-G2 and HeLa cell lines.
Function	function:Functions as a transcriptional activator in a promoter context-dependent manner. Modulates the placental expression of CYP11A1. Involved in regulation of the alpha-globin gene in erythroid cells. Activation of the alpha-globin promoter in erythroid cells is via synergistic interaction with TFCP2 (By similarity). Involved in regulation of the alpha-globin gene in erythroid cells. Activation of the alpha-globin promoter in erythroid cells is via synergistic interaction with TFCP2 (By similarity). Binds strongly to sequences around the HIV-1 initiation site and weakly over the TATA-box. Represses HIV-1 transcription by inhibiting the binding of TFIID to the TATA-box.,induction:Induced by HIV-1 infection of lymphocytes.,similarity:Belongs to the grh/CP2 family. CP2 subfamily.,subunit:Interacts with TFCP2. Interacts with PIAS1, and is probably part of a complex containing TFCP2, UBIP1



Background

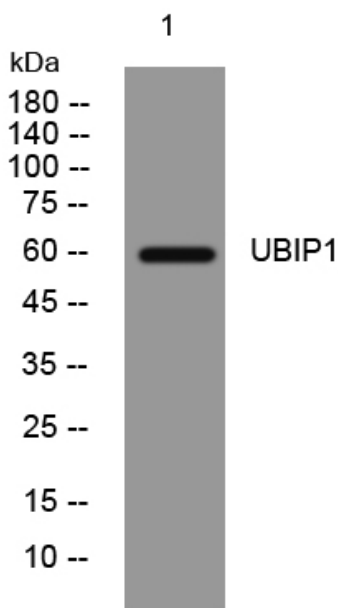
matters needing attention

Avoid repeated freezing and thawing!

Usage suggestions

This product can be used in immunological reaction related experiments. For more information, please consult technical personnel.

Products Images



Western blot analysis of lysates from DU145 cells, primary antibody was diluted at 1:1000, 4° over night