



TRAIP rabbit pAb

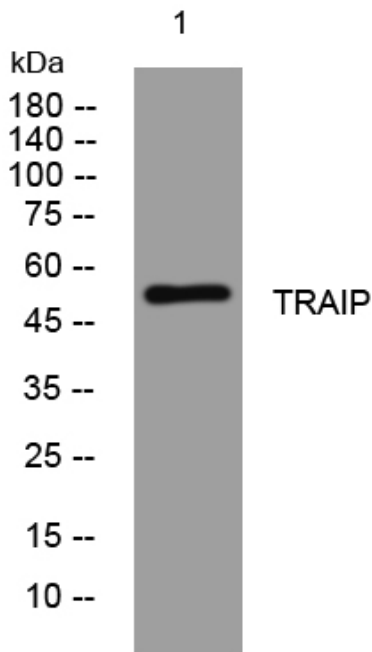
| | |
|----------------------------------|--|
| Catalog No | YP-Ab-08822 |
| Isotype | IgG |
| Reactivity | Human; Mouse |
| Applications | WB |
| Gene Name | TRAIP RNF206 TRIP |
| Protein Name | TRAIP |
| Immunogen | Synthesized peptide derived from human TRAIP AA range: 399-449 |
| Specificity | This antibody detects endogenous levels of TRAIP at Human/Mouse |
| Formulation | Liquid in PBS containing 50% glycerol, 0.5% BSA and 0.02% sodium azide. |
| Source | Polyclonal, Rabbit,IgG |
| Purification | The antibody was affinity-purified from rabbit serum by affinity-chromatography using specific immunogen. |
| Dilution | WB 1: 500-2000 |
| Concentration | 1 mg/ml |
| Purity | ≥90% |
| Storage Stability | -20°C/1 year |
| Synonyms | |
| Observed Band | |
| Cell Pathway | Nucleus, nucleoplasm . Nucleus, nucleolus . Chromosome . Cytoplasm. Cytoplasm, perinuclear region . In the nucleus, found in close proximity to PCNA, suggesting localization at replication foci (PubMed:26595769). Localizes to DNA damage sites in response to replication stress (PubMed:26781088, PubMed:26595769, PubMed:26711499). . |
| Tissue Specificity | |
| Function | function:Inhibits activation of NF-kappa-B mediated by TNF.,similarity:Contains 1 RING-type zinc finger.,subunit:Binds TRAF1 and TRAF2 and is part of the receptor-TRAF signaling complex (By similarity). Interacts with CYLD., |
| Background | This gene encodes a protein that contains an N-terminal RING finger motif and a putative coiled-coil domain. A similar murine protein interacts with TNFR-associated factor 1 (TRAF1), TNFR-associated factor 2 (TRAF2), and cylindromatosis. The interaction with TRAF2 inhibits TRAF2-mediated nuclear factor kappa-B, subunit 1 activation that is required for cell activation and protection against apoptosis. [provided by RefSeq, Jul 2008], |
| matters needing attention | Avoid repeated freezing and thawing! |



Usage suggestions

This product can be used in immunological reaction related experiments. For more information, please consult technical personnel.

Products Images



Western blot analysis of lysates from VEC cells, primary antibody was diluted at 1:1000, 4° over night