



CBPC5 rabbit pAb

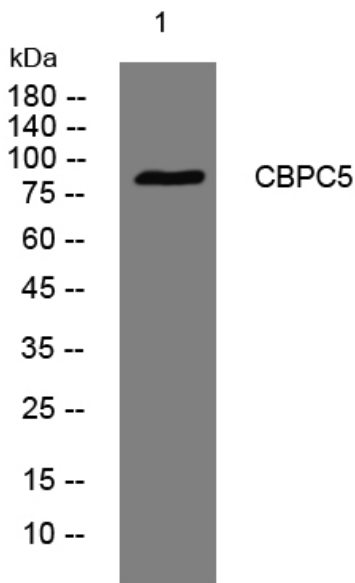
Catalog No	YP-Ab-08840
Isotype	IgG
Reactivity	Human; Mouse;Rat
Applications	WB
Gene Name	AGBL5 CCP5
Protein Name	CBPC5
Immunogen	Synthesized peptide derived from human CBPC5 AA range: 499-549
Specificity	This antibody detects endogenous levels of CBPC5 at Human/Mouse/Rat
Formulation	Liquid in PBS containing 50% glycerol, 0.5% BSA and 0.02% sodium azide.
Source	Polyclonal, Rabbit,IgG
Purification	The antibody was affinity-purified from rabbit serum by affinity-chromatography using specific immunogen.
Dilution	WB 1: 500-2000
Concentration	1 mg/ml
Purity	≥90%
Storage Stability	-20°C/1 year
Synonyms	
Observed Band	
Cell Pathway	Cytoplasm, cytosol . Nucleus . Cytoplasm, cytoskeleton, spindle . Midbody . Mainly cytoplasmic. Slight accumulation in the nucleus is observed (By similarity). Colocalizes with alpha-tubulin in the mitotic spindle and with midbody microtubules in the intercellular bridges formed during cytokinesis. .
Tissue Specificity	Expressed in brain.
Function	similarity:Belongs to the peptidase M14 family.,tissue specificity:Expressed in brain.,
Background	This gene encodes a metallocarboxypeptidase involved in protein deglutamylation and a member of the peptidase M14 family of proteins. The encoded protein has been described as a "dual-functional" deglutamyase that can remove glutamate residues from both carboxyl termini and side chains of protein substrates. This deglutamyase activity may be important in antiviral immunity. Mutations in this gene are associated with retinitis pigmentosa. [provided by RefSeq, Jul 2016],
matters needing attention	Avoid repeated freezing and thawing!



Usage suggestions

This product can be used in immunological reaction related experiments. For more information, please consult technical personnel.

Products Images



Western blot analysis of lysates from 3T3 cells, primary antibody was diluted at 1:1000, 4° over night