



EXOSX rabbit pAb

Catalog No	YP-Ab-08850
Isotype	IgG
Reactivity	Human; Mouse
Applications	WB
Gene Name	EXOSC10 PMSCL PMSCL2 RRP6
Protein Name	EXOSX
Immunogen	Synthesized peptide derived from human EXOSX AA range: 391-441
Specificity	This antibody detects endogenous levels of EXOSX at Human/Mouse
Formulation	Liquid in PBS containing 50% glycerol, 0.5% BSA and 0.02% sodium azide.
Source	Polyclonal, Rabbit,IgG
Purification	The antibody was affinity-purified from rabbit serum by affinity-chromatography using specific immunogen.
Dilution	WB 1: 500-2000
Concentration	1 mg/ml
Purity	≥90%
Storage Stability	-20°C/1 year
Synonyms	
Observed Band	
Cell Pathway	Cytoplasm. Nucleus, nucleolus. Nucleus. Strongly enriched in the nucleolus and a small amount has been found in cytoplasm supporting the existence of a nucleolar RNA exosome complex form.
Tissue Specificity	
Function	disease:Antibodies against PM/SCL are found in patients with polymyositis and/or scleroderma.,function:Part of a post-splicing multiprotein complex involved in both mRNA nuclear export and mRNA surveillance. Involved in nonsense-mediated decay (NMD) of mRNAs containing premature stop codons. Component of the exosome 3'->5' exoribonuclease complex, a complex that degrades inherently unstable mRNAs containing AU-rich elements (AREs) within their 3' untranslated regions. Required for the 3' processing of the 7S pre-rRNA to the mature 5.8S rRNA. Could be an exonuclease (By similarity). Mediates the association of MTR4, C1D and MPP6 with the exosome and this complex is required for the maturation of 5.8S rRNA. Required for nucleolar localization of C1D.,similarity:Contains 1 3'-5' exonuclease domain.,similarity:Contains 1 HRDC domain.,subunit:Component of the exosome multienzyme ribonuclease com
Background	



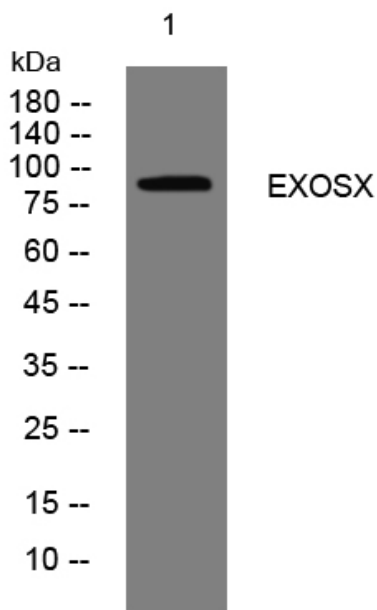
matters needing attention

Avoid repeated freezing and thawing!

Usage suggestions

This product can be used in immunological reaction related experiments. For more information, please consult technical personnel.

Products Images



Western blot analysis of lysates from U2OS cells, primary antibody was diluted at 1:1000, 4° over night