



EST5A rabbit pAb

Catalog No	YP-Ab-08862
Isotype	IgG
Reactivity	Human; Mouse;Rat
Applications	WB
Gene Name	CES5A CES7
Protein Name	EST5A
Immunogen	Synthesized peptide derived from human EST5A AA range: 278-328
Specificity	This antibody detects endogenous levels of EST5A at Human/Mouse/Rat
Formulation	Liquid in PBS containing 50% glycerol, 0.5% BSA and 0.02% sodium azide.
Source	Polyclonal, Rabbit,IgG
Purification	The antibody was affinity-purified from rabbit serum by affinity-chromatography using specific immunogen.
Dilution	WB 1: 500-2000
Concentration	1 mg/ml
Purity	≥90%
Storage Stability	-20°C/1 year
Synonyms	
Observed Band	
Cell Pathway	Secreted .
Tissue Specificity	
Function	catalytic activity:A carboxylic ester + H(2)O = an alcohol + a carboxylate.,caution:Was named CES5 by Ref.1.,function:Involved in the detoxification of xenobiotics and in the activation of ester and amide prodrugs.,PTM:N-glycosylated.,similarity:Belongs to the type-B carboxylesterase/lipase family.,
Background	This gene encodes a member of the carboxylesterase large family. The family members are responsible for the hydrolysis or transesterification of various xenobiotics, such as cocaine and heroin, and endogenous substrates with ester, thioester, or amide bonds. They also participate in fatty acyl and cholesterol ester metabolism, and may play a role in the blood-brain barrier system. This gene, also called CES5, is predominantly expressed in peripheral tissues, including brain, kidney, lung and testis. It encodes a secreted enzyme. Because of high levels in the urine of male domestic cats, this enzyme is also called cauxin (carboxylesterase-like urinary excreted protein). The enzyme functions in regulating the production of a pheromone precursor and may contribute to lipid



and cholesterol transfer processes within male reproductive fluids. Multiple transcript variants encoding different isoforms have been found for this gene. [provided by RefSeq, Jun 2010],

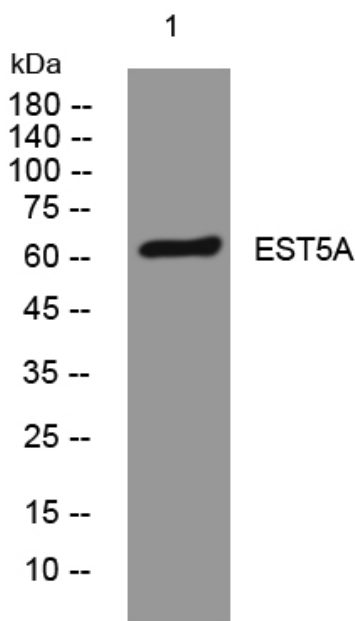
matters needing attention

Avoid repeated freezing and thawing!

Usage suggestions

This product can be used in immunological reaction related experiments. For more information, please consult technical personnel.

Products Images



Western blot analysis of lysates from HpeG2 cells, primary antibody was diluted at 1:1000, 4° over night