



SNX33 rabbit pAb

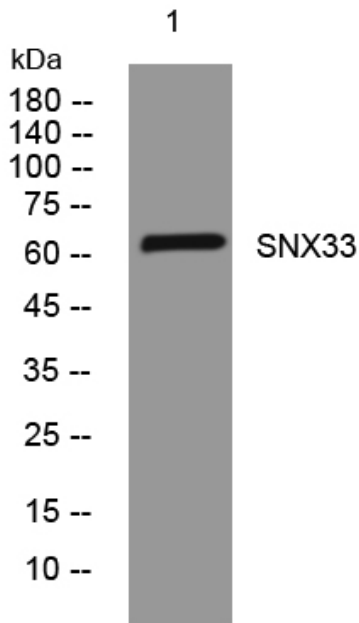
Catalog No	YP-Ab-08888
Isotype	IgG
Reactivity	Human; Mouse
Applications	WB
Gene Name	SNX33 SH3PX3 SH3PXD3C SNX30
Protein Name	SNX33
Immunogen	Synthesized peptide derived from human SNX33 AA range: 55-105
Specificity	This antibody detects endogenous levels of SNX33 at Human/Mouse
Formulation	Liquid in PBS containing 50% glycerol, 0.5% BSA and 0.02% sodium azide.
Source	Polyclonal, Rabbit,IgG
Purification	The antibody was affinity-purified from rabbit serum by affinity-chromatography using specific immunogen.
Dilution	WB 1: 500-2000
Concentration	1 mg/ml
Purity	≥90%
Storage Stability	-20°C/1 year
Synonyms	
Observed Band	
Cell Pathway	Cytoplasm, cytosol. Membrane; Peripheral membrane protein; Cytoplasmic side. Cytoplasmic vesicle membrane; Peripheral membrane protein; Cytoplasmic side. Primarily cytosolic, but a minor proportion is membrane-bound (PubMed:18353773). Not associated with membranes (PubMed:21048941). .
Tissue Specificity	Detected in heart and pancreas.
Function	similarity:Belongs to the sorting nexin family.,similarity:Contains 1 PX (phox homology) domain.,similarity:Contains 1 SH3 domain.,subunit:Interacts with ADAM15.,
Background	The protein encoded by this gene is involved in cytoskeletal reorganization, vesicle trafficking, endocytosis, and mitosis. The encoded protein is essential for the creation of the cleavage furrow during mitosis and for completion of mitosis. Two transcript variants encoding different isoforms have been found for this gene. [provided by RefSeq, Dec 2015],
matters needing attention	Avoid repeated freezing and thawing!



Usage suggestions

This product can be used in immunological reaction related experiments. For more information, please consult technical personnel.

Products Images



Western blot analysis of lysates from DU145 cells, primary antibody was diluted at 1:1000, 4° over night