

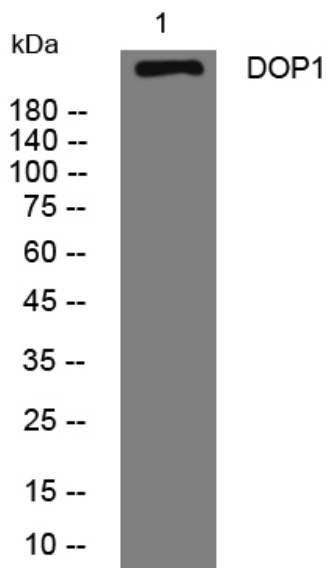


# DOP1 rabbit pAb

<b>Catalog No</b>	YP-Ab-08906
<b>Isotype</b>	IgG
<b>Reactivity</b>	Human; Mouse
<b>Applications</b>	WB
<b>Gene Name</b>	DOPEY1 KIAA1117
<b>Protein Name</b>	DOP1
<b>Immunogen</b>	Synthesized peptide derived from human DOP1 AA range: 1543-1593
<b>Specificity</b>	This antibody detects endogenous levels of DOP1 at Human/Mouse
<b>Formulation</b>	Liquid in PBS containing 50% glycerol, 0.5% BSA and 0.02% sodium azide.
<b>Source</b>	Polyclonal, Rabbit,IgG
<b>Purification</b>	The antibody was affinity-purified from rabbit serum by affinity-chromatography using specific immunogen.
<b>Dilution</b>	WB 1: 500-2000
<b>Concentration</b>	1 mg/ml
<b>Purity</b>	≥90%
<b>Storage Stability</b>	-20°C/1 year
<b>Synonyms</b>	
<b>Observed Band</b>	
<b>Cell Pathway</b>	Golgi apparatus membrane ; Peripheral membrane protein .
<b>Tissue Specificity</b>	
<b>Function</b>	function:May be involved in protein traffic between late Golgi and early endosomes.,similarity:Belongs to the dopey family.,
<b>Background</b>	
<b>matters needing attention</b>	Avoid repeated freezing and thawing!
<b>Usage suggestions</b>	This product can be used in immunological reaction related experiments. For more information, please consult technical personnel.



## Products Images



Western blot analysis of lysates from 3T3 cells, primary antibody was diluted at 1:1000, 4° over night