



# ADAM2 rabbit pAb

<b>Catalog No</b>	YP-Ab-08910
<b>Isotype</b>	IgG
<b>Reactivity</b>	Human; Mouse;Rat
<b>Applications</b>	WB
<b>Gene Name</b>	ADAM2 FTNB
<b>Protein Name</b>	ADAM2
<b>Immunogen</b>	Synthesized peptide derived from human ADAM2 AA range: 109-159
<b>Specificity</b>	This antibody detects endogenous levels of ADAM2 at Human/Mouse/Rat
<b>Formulation</b>	Liquid in PBS containing 50% glycerol, 0.5% BSA and 0.02% sodium azide.
<b>Source</b>	Polyclonal, Rabbit,IgG
<b>Purification</b>	The antibody was affinity-purified from rabbit serum by affinity-chromatography using specific immunogen.
<b>Dilution</b>	WB 1: 500-2000
<b>Concentration</b>	1 mg/ml
<b>Purity</b>	≥90%
<b>Storage Stability</b>	-20°C/1 year
<b>Synonyms</b>	
<b>Observed Band</b>	
<b>Cell Pathway</b>	Membrane; Single-pass type I membrane protein.
<b>Tissue Specificity</b>	Expressed specifically in spermatogenic cells in the seminiferous cells. Not detected in fetal tissues.
<b>Function</b>	<p>domain:A tripeptide motif (FEE) within disintegrin-like domain could be involved in the binding to egg integrin receptor and thus could mediate sperm/egg binding.,function:Sperm surface membrane protein that may be involved in sperm-egg plasma membrane adhesion and fusion during fertilization. Could have a direct role in sperm-zona binding or migration of sperm from the uterus into the oviduct. Interactions with egg membrane could be mediated via binding between its disintegrin-like domain to one or more integrins receptors on the egg. This is a non catalytic metalloprotease-like protein.,miscellaneous:In mammals, exists as a heterodimer composed of an alpha and beta subunits. In human, fertilin subunit alpha is a pseudogene.,PTM:The prodomain and the metalloprotease domain are cleaved during the epididymal maturation of the spermatozoa.,similarity:Contains 1 disintegrin domain.,similari</p>
<b>Background</b>	This gene encodes a member of the ADAM (a disintegrin and metalloprotease domain) family. Members of this family are membrane-anchored proteins structurally related to snake venom disintegrins, and have been implicated in a



variety of biological processes involving cell-cell and cell-matrix interactions, including fertilization, muscle development, and neurogenesis. The encoded protein is a subunit of an integral sperm membrane glycoprotein called fertilin, which plays an important role in sperm-egg interactions. Alternative splicing results in multiple transcript variants encoding different isoforms. [provided by RefSeq, May 2013],

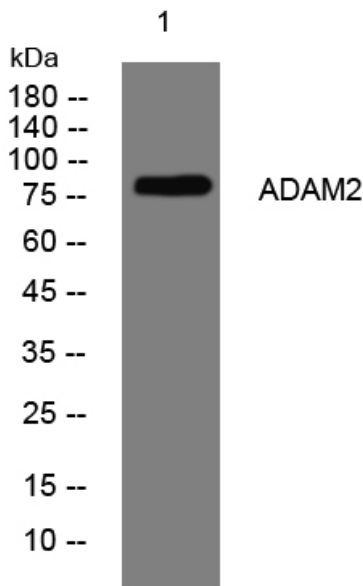
**matters needing attention**

Avoid repeated freezing and thawing!

**Usage suggestions**

This product can be used in immunological reaction related experiments. For more information, please consult technical personnel.

## Products Images



Western blot analysis of lysates from KB cells, primary antibody was diluted at 1:1000, 4° over night