



EYS rabbit pAb

Catalog No	YP-Ab-08921
Isotype	IgG
Reactivity	Human;Rat;Mouse;
Applications	IHC;IF
Gene Name	EYS C6orf178 C6orf179 C6orf180 EGFL10 EGFL11 SPAM UNQ9424/PRO34591
Protein Name	EYS
Immunogen	Synthesized peptide derived from human EYS AA range: 2780-2830
Specificity	This antibody detects endogenous levels of EYS at Human
Formulation	Liquid in PBS containing 50% glycerol, 0.5% BSA and 0.02% sodium azide.
Source	Polyclonal, Rabbit,IgG
Purification	The antibody was affinity-purified from rabbit serum by affinity-chromatography using specific immunogen.
Dilution	IHC-p 1: 50-200. IF 1:50-200
Concentration	1 mg/ml
Purity	≥90%
Storage Stability	-20°C/1 year
Synonyms	
Observed Band	
Cell Pathway	Cell projection, cilium, photoreceptor outer segment . Cell projection, cilium . Cytoplasm, cytoskeleton, cilium axoneme . Cytoplasm, cytoskeleton, microtubule organizing center, centrosome . Secreted, extracellular space, extracellular matrix, interphotoreceptor matrix . Localizes to discrete puncta at, or adjacent to, the photoreceptor connecting cilium (PubMed:27737822). Highly expressed in cone photoreceptor outer segments (PubMed:27737822). Weakly expressed in rod photoreceptor outer segments (By similarity). May localize to the cilium axoneme (PubMed:27846257). May also be secreted into the interphotoreceptor extracellular matrix (PubMed:27737822). .
Tissue Specificity	Expressed in retina (at protein level) (PubMed:18976725, PubMed:18836446, PubMed:27737822, PubMed:27846257). Isoform 1: Detected in retina (PubMed:27846257). Isoform 2: Detected in retina (PubMed:27846257). Isoform 3: Strongly expressed in retina and testis (PubMed:27846257). Isoform 4: Strongly expressed in testis, and weakly expressed in retina (PubMed:27846257).
Function	disease:Defects in EGFL10 are the cause of retinitis pigmentosa type 25 (RP25) [MIM:602772]. RP leads to degeneration of retinal photoreceptor cells. Patients suffer of night blindness, beginning at approximately 25 years of age, and deterioration of visual acuity (central vision), beginning at approximately 30 years of age. By age 55 to 60 years, many affected subjects had no perception of light in



either eye.,function:Required to maintain the integrity of photoreceptor cells.,miscellaneous:Although the protein is conserved in Drosophila, the gene encoding the orthologous protein is inactive in rodents.,similarity:Belongs to the EYS family.,similarity:Contains 27 EGF-like domains.,similarity:Contains 5 laminin G-like domains.,subcellular location:Localizes in the photoreceptor cells layer.,tissue specificity:Present in retina.,

Background

The product of this gene contains multiple epidermal growth factor (EGF)-like and LamG domains. The protein is expressed in the photoreceptor layer of the retina, and the gene is mutated in autosomal recessive retinitis pigmentosa. Multiple transcript variants encoding different isoforms have been found for this gene. [provided by RefSeq, Dec 2008],

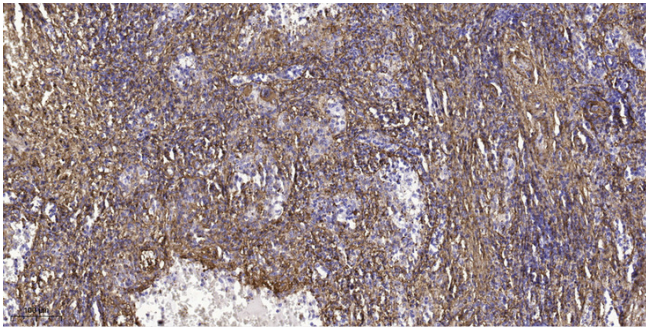
matters needing attention

Avoid repeated freezing and thawing!

Usage suggestions

This product can be used in immunological reaction related experiments. For more information, please consult technical personnel.

Products Images



Immunohistochemical analysis of paraffin-embedded human spleen tissue. 1,primary Antibody was diluted at 1:200(4° overnight). 2, Sodium citrate pH 6.0 was used for antigen retrieval(>98°C,20min). 3,Secondary antibody was diluted at 1:200