



## GMCLL rabbit pAb

<b>Catalog No</b>	YP-Ab-08923
<b>Isotype</b>	IgG
<b>Reactivity</b>	Human; Mouse
<b>Applications</b>	WB
<b>Gene Name</b>	GMCL1P1 GCL GMCL1L
<b>Protein Name</b>	GMCLL
<b>Immunogen</b>	Synthesized peptide derived from human GMCLL AA range: 20-70
<b>Specificity</b>	This antibody detects endogenous levels of GMCLL at Human/Mouse
<b>Formulation</b>	Liquid in PBS containing 50% glycerol, 0.5% BSA and 0.02% sodium azide.
<b>Source</b>	Polyclonal, Rabbit,IgG
<b>Purification</b>	The antibody was affinity-purified from rabbit serum by affinity-chromatography using specific immunogen.
<b>Dilution</b>	WB 1: 500-2000
<b>Concentration</b>	1 mg/ml
<b>Purity</b>	≥90%
<b>Storage Stability</b>	-20°C/1 year
<b>Synonyms</b>	
<b>Observed Band</b>	
<b>Cell Pathway</b>	Nucleus matrix .
<b>Tissue Specificity</b>	Expressed predominantly in testis.
<b>Function</b>	function:Possible function in spermatogenesis. Enhances the degradation of MDM2 and increases the amount of p53 probably by modulating the nucleocytoplasmic transport (By similarity). Probable substrate-specific adapter of an E3 ubiquitin-protein ligase complex which mediates the ubiquitination and subsequent proteasomal degradation of target proteins.,function:Possible function in spermatogenesis. Enhances the degradation of MDM2 and increases the amount of p53 probably by modulating the nucleocytoplasmic transport.,pathway:Protein modification; protein ubiquitination.,similarity:Contains 1 BTB (POZ) domain.,subunit:Interacts with TMPO-beta, TSG101 and TFDP2 (By similarity). Interacts with EMD.,subunit:Interacts with TMPO-Beta, TSG101 and TFDP2. Interacts with EMD (By similarity). Interacts with CUL3.,
<b>Background</b>	This locus shares a high degree of identity with the multi-exon germ cell-less gene on chromosome 2. Despite its single-exon nature, this chromosome 5 locus contains an open reading frame that could putatively encode a full-length germ cell-less related protein. [provided by RefSeq, Jul 2008],



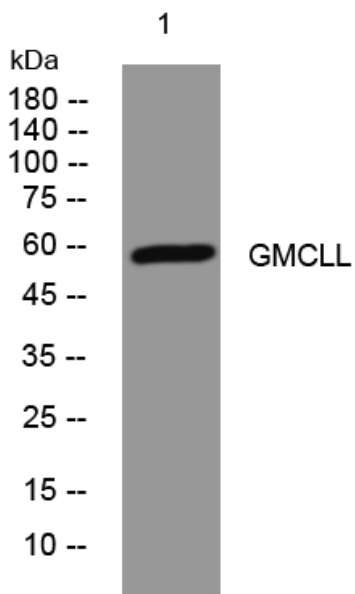
**matters needing attention**

Avoid repeated freezing and thawing!

**Usage suggestions**

This product can be used in immunological reaction related experiments. For more information, please consult technical personnel.

**Products Images**



Western blot analysis of lysates from DU145 cells, primary antibody was diluted at 1:1000, 4° over night