



# TSSP rabbit pAb

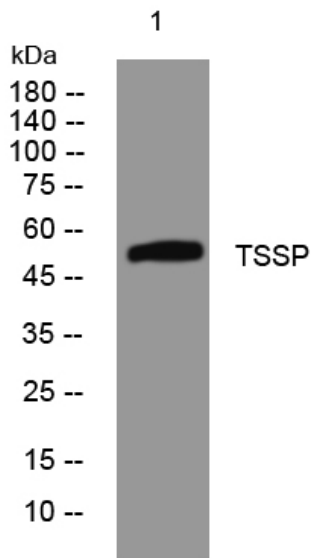
<b>Catalog No</b>	YP-Ab-08929
<b>Isotype</b>	IgG
<b>Reactivity</b>	Human; Mouse
<b>Applications</b>	WB
<b>Gene Name</b>	PRSS16 TSSP
<b>Protein Name</b>	TSSP
<b>Immunogen</b>	Synthesized peptide derived from human TSSP AA range: 50-100
<b>Specificity</b>	This antibody detects endogenous levels of TSSP at Human/Mouse
<b>Formulation</b>	Liquid in PBS containing 50% glycerol, 0.5% BSA and 0.02% sodium azide.
<b>Source</b>	Polyclonal, Rabbit,IgG
<b>Purification</b>	The antibody was affinity-purified from rabbit serum by affinity-chromatography using specific immunogen.
<b>Dilution</b>	WB 1: 500-2000
<b>Concentration</b>	1 mg/ml
<b>Purity</b>	≥90%
<b>Storage Stability</b>	-20°C/1 year
<b>Synonyms</b>	
<b>Observed Band</b>	
<b>Cell Pathway</b>	Cytoplasmic vesicle. Vesicular, either lysosomal or endosomal.
<b>Tissue Specificity</b>	Expressed predominantly in cortical thymic epithelial cells.
<b>Function</b>	developmental stage:Expressed in fetal thymus.,function:Protease that may play a role in T-cell development.,similarity:Belongs to the peptidase S28 family.,subcellular location:Vesicular, either lysosomal or endosomal.,tissue specificity:Expressed predominantly in cortical thymic epithelial cells.,
<b>Background</b>	This gene encodes a serine protease expressed exclusively in the thymus. It is thought to play a role in the alternative antigen presenting pathway used by cortical thymic epithelial cells during the positive selection of T cells. The gene is found in the large histone gene cluster on chromosome 6, near the major histocompatibility complex (MHC) class I region. A second transcript variant has been described, but its full length nature has not been determined. [provided by RefSeq, Jul 2008],
<b>matters needing attention</b>	Avoid repeated freezing and thawing!



### Usage suggestions

This product can be used in immunological reaction related experiments. For more information, please consult technical personnel.

## Products Images



Western blot analysis of lysates from HpeG2 cells, primary antibody was diluted at 1:1000, 4° over night