



BTBD1 rabbit pAb

Catalog No	YP-Ab-08930
Isotype	IgG
Reactivity	Human; Mouse
Applications	WB
Gene Name	BTBD1 C15orf1 NS5ATP8
Protein Name	BTBD1
Immunogen	Synthesized peptide derived from human BTBD1 AA range: 115-165
Specificity	This antibody detects endogenous levels of BTBD1 at Human/Mouse
Formulation	Liquid in PBS containing 50% glycerol, 0.5% BSA and 0.02% sodium azide.
Source	Polyclonal, Rabbit,IgG
Purification	The antibody was affinity-purified from rabbit serum by affinity-chromatography using specific immunogen.
Dilution	WB 1: 500-2000
Concentration	1 mg/ml
Purity	≥90%
Storage Stability	-20°C/1 year
Synonyms	
Observed Band	
Cell Pathway	Cytoplasm . Localizes to punctate or elongated cytoplasmic bodies. .
Tissue Specificity	Ubiquitous; highest levels in testes, heart and skeletal muscle.
Function	caution:The sequence shown here is derived from an Ensembl automatic analysis pipeline and should be considered as preliminary data.,function:Probable substrate-specific adapter of an E3 ubiquitin-protein ligase complex which mediates the ubiquitination and subsequent proteasomal degradation of target proteins.,pathway:Protein modification; protein ubiquitination.,similarity:Contains 1 BTB (POZ) domain.,subcellular location:Cytoplasmic bodies.,subunit:Interacts with topoisomerase 1 and with TRIM5 isoform Delta. Interacts with CUL3.,tissue specificity:Ubiquitous; higher levels in heart and skeletal muscle.,
Background	The C-terminus of the protein encoded by this gene binds topoisomerase I. The N-terminus contains a proline-rich region and a BTB/POZ domain (broad-complex, Tramtrack and bric a brac/Pox virus and Zinc finger), both of which are typically involved in protein-protein interactions. Subcellularly, the protein localizes to cytoplasmic bodies. Alternative splicing results in multiple transcript variants encoding different isoforms. [provided by RefSeq, Jul 2008],



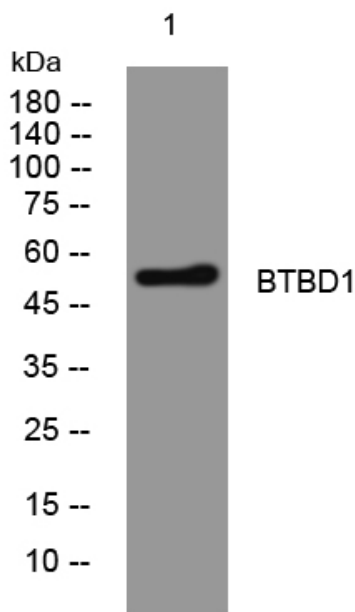
matters needing attention

Avoid repeated freezing and thawing!

Usage suggestions

This product can be used in immunological reaction related experiments. For more information, please consult technical personnel.

Products Images



Western blot analysis of lysates from HuvEc cells, primary antibody was diluted at 1:1000, 4° over night