



RGL3 rabbit pAb

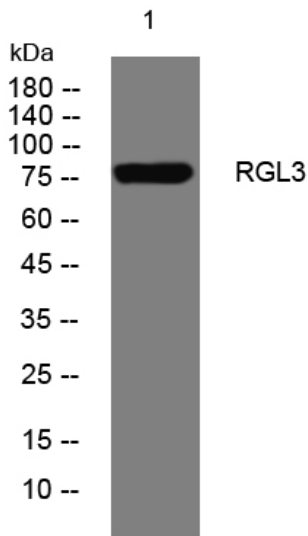
| | |
|----------------------------------|---|
| Catalog No | YP-Ab-08932 |
| Isotype | IgG |
| Reactivity | Human; Mouse |
| Applications | WB |
| Gene Name | RGL3 |
| Protein Name | RGL3 |
| Immunogen | Synthesized peptide derived from human RGL3 AA range: 601-651 |
| Specificity | This antibody detects endogenous levels of RGL3 at Human/Mouse |
| Formulation | Liquid in PBS containing 50% glycerol, 0.5% BSA and 0.02% sodium azide. |
| Source | Polyclonal, Rabbit,IgG |
| Purification | The antibody was affinity-purified from rabbit serum by affinity-chromatography using specific immunogen. |
| Dilution | WB 1: 500-2000 |
| Concentration | 1 mg/ml |
| Purity | ≥90% |
| Storage Stability | -20°C/1 year |
| Synonyms | |
| Observed Band | |
| Cell Pathway | intracellular, |
| Tissue Specificity | |
| Function | domain:The Ras-associating domain plays a central role in the activation of Ral-A GDP/GTP exchange activity.,function:Guanine nucleotide exchange factor (GEF) for Ral-A. Potential effector of GTPase HRas and Ras-related protein M-Ras. Negatively regulates Elk-1-dependent gene induction downstream of HRas and MEKK1.,similarity:Contains 1 N-terminal Ras-GEF domain.,similarity:Contains 1 Ras-associating domain.,similarity:Contains 1 Ras-GEF domain.,subunit:Interacts with GTP-bound forms of RIT1, HRAS and MRAS., |
| Background | |
| matters needing attention | Avoid repeated freezing and thawing! |



Usage suggestions

This product can be used in immunological reaction related experiments. For more information, please consult technical personnel.

Products Images



Western blot analysis of lysates from HeLa cells, primary antibody was diluted at 1:1000, 4° over night