

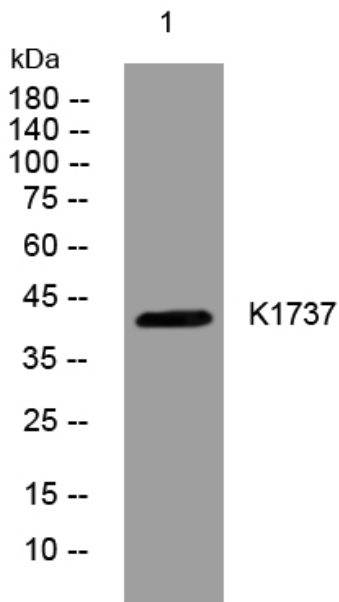


K1737 rabbit pAb

Catalog No	YP-Ab-08947
Isotype	IgG
Reactivity	Human; Mouse
Applications	WB
Gene Name	KIAA1737
Protein Name	K1737
Immunogen	Synthesized peptide derived from human K1737 AA range: 141-191
Specificity	This antibody detects endogenous levels of K1737 at Human/Mouse
Formulation	Liquid in PBS containing 50% glycerol, 0.5% BSA and 0.02% sodium azide.
Source	Polyclonal, Rabbit,IgG
Purification	The antibody was affinity-purified from rabbit serum by affinity-chromatography using specific immunogen.
Dilution	WB 1: 500-2000
Concentration	1 mg/ml
Purity	≥90%
Storage Stability	-20°C/1 year
Synonyms	
Observed Band	
Cell Pathway	Nucleus . Cytoplasm, cytosol . Predominantly localizes to the nucleus, where it co-localizes with CLOCK. At the G1/S boundary, partially translocated to the cytosol. .
Tissue Specificity	
Function	
Background	
matters needing attention	Avoid repeated freezing and thawing!
Usage suggestions	This product can be used in immunological reaction related experiments. For more information, please consult technical personnel.



Products Images



Western blot analysis of lysates from SH-SY5Y cells, primary antibody was diluted at 1:1000, 4° over night