



NFIB rabbit pAb

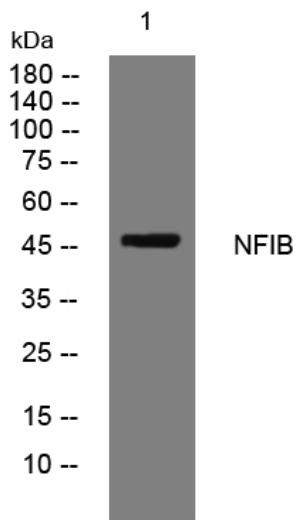
Catalog No	YP-Ab-08969
Isotype	IgG
Reactivity	Human; Mouse
Applications	WB
Gene Name	NFIB
Protein Name	NFIB
Immunogen	Synthesized peptide derived from human NFIB AA range: 348-398
Specificity	This antibody detects endogenous levels of NFIB at Human/Mouse
Formulation	Liquid in PBS containing 50% glycerol, 0.5% BSA and 0.02% sodium azide.
Source	Polyclonal, Rabbit,IgG
Purification	The antibody was affinity-purified from rabbit serum by affinity-chromatography using specific immunogen.
Dilution	WB 1: 500-2000
Concentration	1 mg/ml
Purity	≥90%
Storage Stability	-20°C/1 year
Synonyms	
Observed Band	
Cell Pathway	Nucleus.
Tissue Specificity	
Function	alternative products:Additional isoforms seem to exist,function:Recognizes and binds the palindromic sequence 5'-TTGGCNNNNNGCCAA-3' present in viral and cellular promoters and in the origin of replication of adenovirus type 2. These proteins are individually capable of activating transcription and replication.,similarity:Belongs to the CTF/NF-I family.,similarity:Contains 1 CTF/NF-I DNA-binding domain.,subunit:Binds DNA as a homodimer.,
Background	
matters needing attention	Avoid repeated freezing and thawing!



Usage suggestions

This product can be used in immunological reaction related experiments. For more information, please consult technical personnel.

Products Images



Western blot analysis of lysates from KB cells, primary antibody was diluted at 1:1000, 4° over night