

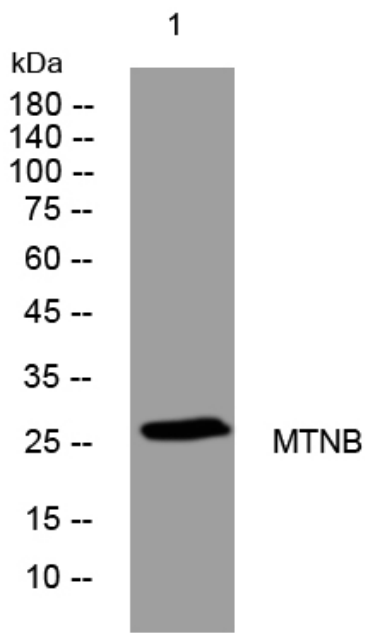


MTNB rabbit pAb

Catalog No	YP-Ab-08978
Isotype	IgG
Reactivity	Human; Mouse
Applications	WB
Gene Name	APIP CGI-29
Protein Name	MTNB
Immunogen	Synthesized peptide derived from human MTNB AA range: 133-183
Specificity	This antibody detects endogenous levels of MTNB at Human/Mouse
Formulation	Liquid in PBS containing 50% glycerol, 0.5% BSA and 0.02% sodium azide.
Source	Polyclonal, Rabbit,IgG
Purification	The antibody was affinity-purified from rabbit serum by affinity-chromatography using specific immunogen.
Dilution	WB 1: 500-2000
Concentration	1 mg/ml
Purity	≥90%
Storage Stability	-20°C/1 year
Synonyms	
Observed Band	
Cell Pathway	Cytoplasm .
Tissue Specificity	Isoform 1 is ubiquitously expressed. Isoform 2 is expressed at lower levels and detected in heart, brain, pancreas, liver, placenta, skeletal muscle and kidney.
Function	cofactor: Binds 1 zinc ion per subunit .,function: Has an anti-apoptotic function and prevents muscle ischemic damage. Inhibits the cytochrome c-dependent and APAF1-mediated cell death.,similarity: Belongs to the aldolase class II family. APIP subfamily.,subunit: Interacts with APAF1.,tissue specificity: Ubiquitously expressed with high expression in skeletal muscle, heart and kidney.,
Background	APIP is an APAF1 (MIM 602233)-interacting protein that acts as a negative regulator of ischemic/hypoxic injury (Cho et al., 2004 [PubMed 15262985]).[supplied by OMIM, Dec 2008],
matters needing attention	Avoid repeated freezing and thawing!
Usage suggestions	This product can be used in immunological reaction related experiments. For more information, please consult technical personnel.



Products Images



Western blot analysis of lysates from DU145 cells,
primary antibody was diluted at 1:1000, 4° over night