



KRA81 rabbit pAb

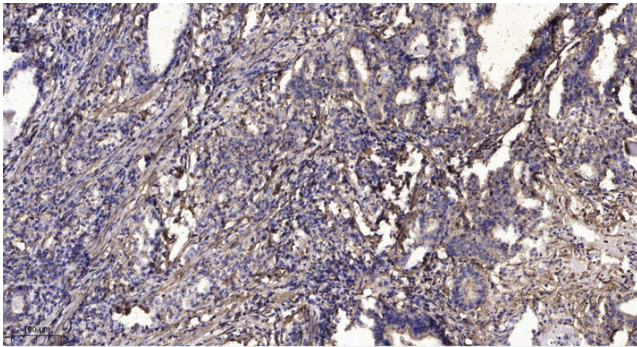
| | |
|----------------------------------|---|
| Catalog No | YP-Ab-08999 |
| Isotype | IgG |
| Reactivity | Human; Mouse |
| Applications | IHC;IF |
| Gene Name | KRTAP8-1 KAP8.1 KRTAP8.1 |
| Protein Name | KRA81 |
| Immunogen | Synthesized peptide derived from human KRA81 AA range: 13-63 |
| Specificity | This antibody detects endogenous levels of KRA81 at Human/Mouse |
| Formulation | Liquid in PBS containing 50% glycerol, 0.5% BSA and 0.02% sodium azide. |
| Source | Polyclonal, Rabbit,IgG |
| Purification | The antibody was affinity-purified from rabbit serum by affinity-chromatography using specific immunogen. |
| Dilution | IHC-p 1: 50-200. IF 1:50-200 |
| Concentration | 1 mg/ml |
| Purity | ≥90% |
| Storage Stability | -20°C/1 year |
| Synonyms | |
| Observed Band | |
| Cell Pathway | intermediate filament, |
| Tissue Specificity | Is essentially restricted to only one vertical half of the hair forming compartment and in beard hairs is absent from the central medulla. |
| Function | function:In the hair cortex, hair keratin intermediate filaments are embedded in an interfilamentous matrix, consisting of hair keratin-associated proteins (KRTAP), which are essential for the formation of a rigid and resistant hair shaft through their extensive disulfide bond cross-linking with abundant cysteine residues of hair keratins. The matrix proteins include the high-sulfur and high-glycine-tyrosine keratins.,similarity:Belongs to the KRTAP type 8 family.,subunit:Interacts with hair keratins.,tissue specificity:Is essentially restricted to only one vertical half of the hair forming compartment and in beard hairs is absent from the central medulla., |
| Background | |
| matters needing attention | Avoid repeated freezing and thawing! |



Usage suggestions

This product can be used in immunological reaction related experiments. For more information, please consult technical personnel.

Products Images



Immunohistochemical analysis of paraffin-embedded human Gastric adenocarcinoma. 1, Antibody was diluted at 1:200(4° overnight). 2, Tris-EDTA,pH9.0 was used for antigen retrieval. 3,Secondary antibody was diluted at 1:200(room temperature, 45min).