

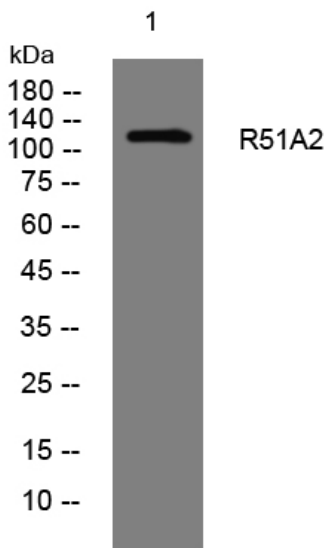


R51A2 rabbit pAb

Catalog No	YP-Ab-09000
Isotype	IgG
Reactivity	Human;Rat;Mouse;
Applications	WB
Gene Name	RAD51AP2
Protein Name	R51A2
Immunogen	Synthesized peptide derived from human R51A2 AA range: 409-459
Specificity	This antibody detects endogenous levels of R51A2 at Human
Formulation	Liquid in PBS containing 50% glycerol, 0.5% BSA and 0.02% sodium azide.
Source	Polyclonal, Rabbit,IgG
Purification	The antibody was affinity-purified from rabbit serum by affinity-chromatography using specific immunogen.
Dilution	WB 1: 500-2000
Concentration	1 mg/ml
Purity	≥90%
Storage Stability	-20°C/1 year
Synonyms	
Observed Band	
Cell Pathway	
Tissue Specificity	Specifically expressed in meiotic tissues. Highly expressed in testis.
Function	subunit:Interacts with RAD51.,tissue specificity:Specifically expressed in meiotic tissues. Highly expressed in testis.,
Background	
matters needing attention	Avoid repeated freezing and thawing!
Usage suggestions	This product can be used in immunological reaction related experiments. For more information, please consult technical personnel.



Products Images



Western blot analysis of lysates from SH-SY5Y cells,
primary antibody was diluted at 1:1000, 4° over night