

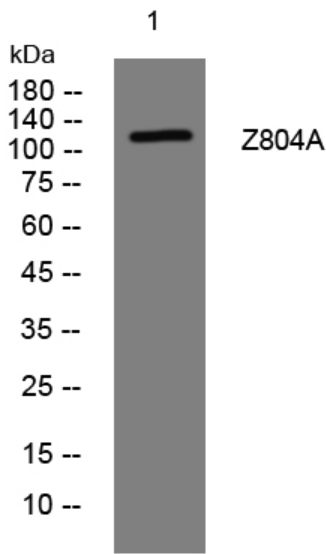


Z804A rabbit pAb

Catalog No	YP-Ab-09008
Isotype	IgG
Reactivity	Human; Mouse
Applications	WB
Gene Name	ZNF804A C2orf10
Protein Name	Z804A
Immunogen	Synthesized peptide derived from human Z804A AA range: 378-428
Specificity	This antibody detects endogenous levels of Z804A at Human/Mouse
Formulation	Liquid in PBS containing 50% glycerol, 0.5% BSA and 0.02% sodium azide.
Source	Polyclonal, Rabbit,IgG
Purification	The antibody was affinity-purified from rabbit serum by affinity-chromatography using specific immunogen.
Dilution	WB 1: 500-2000
Concentration	1 mg/ml
Purity	≥90%
Storage Stability	-20°C/1 year
Synonyms	
Observed Band	
Cell Pathway	integral component of membrane,
Tissue Specificity	
Function	similarity:Contains 1 C2H2-type zinc finger.,subunit:Interacts with ATXN1.,
Background	The protein encoded by this gene is a zinc finger binding protein. Polymorphisms in this gene, especially rs1344706, are thought to confer increased susceptibility to schizophrenia, bipolar disorder, and heroin addiction. [provided by RefSeq, Nov 2015],
matters needing attention	Avoid repeated freezing and thawing!
Usage suggestions	This product can be used in immunological reaction related experiments. For more information, please consult technical personnel.



Products Images



Western blot analysis of lysates from MCF-7 cells,
primary antibody was diluted at 1:1000, 4° over night