

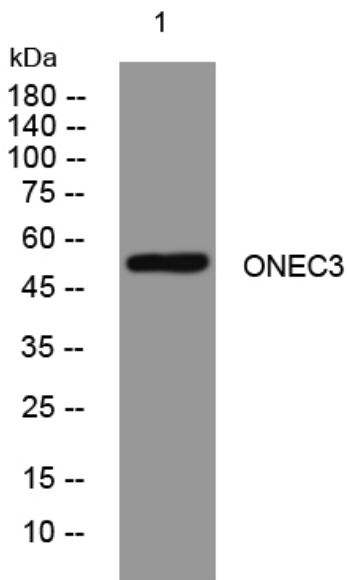


ONEC3 rabbit pAb

Catalog No	YP-Ab-09010
Isotype	IgG
Reactivity	Human; Mouse
Applications	WB
Gene Name	ONECUT3
Protein Name	ONEC3
Immunogen	Synthesized peptide derived from human ONEC3 AA range: 113-163
Specificity	This antibody detects endogenous levels of ONEC3 at Human/Mouse
Formulation	Liquid in PBS containing 50% glycerol, 0.5% BSA and 0.02% sodium azide.
Source	Polyclonal, Rabbit,IgG
Purification	The antibody was affinity-purified from rabbit serum by affinity-chromatography using specific immunogen.
Dilution	WB 1: 500-2000
Concentration	1 mg/ml
Purity	≥90%
Storage Stability	-20°C/1 year
Synonyms	
Observed Band	
Cell Pathway	Nucleus .
Tissue Specificity	
Function	function:Transcriptional activator. Binds the consensus DNA sequence 5'-DHWATTGAYTWWD-3' on a variety of gene promoters such as those of HNF3B and TTR.,similarity:Contains 1 CUT DNA-binding domain.,similarity:Contains 1 homeobox DNA-binding domain.,
Background	
matters needing attention	Avoid repeated freezing and thawing!
Usage suggestions	This product can be used in immunological reaction related experiments. For more information, please consult technical personnel.



Products Images



Western blot analysis of lysates from A431 cells,
primary antibody was diluted at 1:1000, 4° over night