

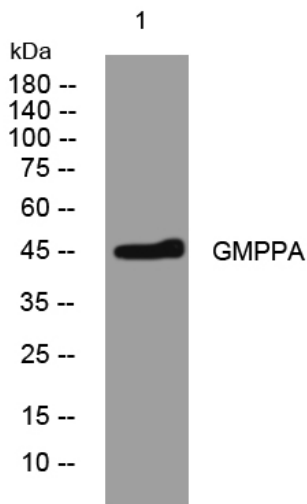


# GMPPA rabbit pAb

<b>Catalog No</b>	YP-Ab-09016
<b>Isotype</b>	IgG
<b>Reactivity</b>	Human; Mouse;Rat
<b>Applications</b>	WB
<b>Gene Name</b>	GMPPA
<b>Protein Name</b>	GMPPA
<b>Immunogen</b>	Synthesized peptide derived from human GMPPA AA range: 184-234
<b>Specificity</b>	This antibody detects endogenous levels of GMPPA at Human/Mouse/Rat
<b>Formulation</b>	Liquid in PBS containing 50% glycerol, 0.5% BSA and 0.02% sodium azide.
<b>Source</b>	Polyclonal, Rabbit,IgG
<b>Purification</b>	The antibody was affinity-purified from rabbit serum by affinity-chromatography using specific immunogen.
<b>Dilution</b>	WB 1: 500-2000
<b>Concentration</b>	1 mg/ml
<b>Purity</b>	≥90%
<b>Storage Stability</b>	-20°C/1 year
<b>Synonyms</b>	
<b>Observed Band</b>	
<b>Cell Pathway</b>	Cytoplasm . Myc-tagged GMPPA shows a diffuse cytoplasmic and nuclear pattern in transfected COS-7 cells.
<b>Tissue Specificity</b>	Expressed in fibroblasts (at protein level).
<b>Function</b>	catalytic activity:GTP + alpha-D-mannose 1-phosphate = diphosphate + GDP-mannose.,pathway:Protein modification; protein glycosylation.,sequence caution:Originally thought to be a fragment.,similarity:Belongs to the transferase hexapeptide repeat family.,
<b>Background</b>	This gene is thought to encode a GDP-mannose pyrophosphorylase. This enzyme catalyzes the reaction which converts mannose-1-phosphate and GTP to GDP-mannose which is involved in the production of N-linked oligosaccharides. [provided by RefSeq, Jul 2008],
<b>matters needing attention</b>	Avoid repeated freezing and thawing!
<b>Usage suggestions</b>	This product can be used in immunological reaction related experiments. For more information, please consult technical personnel.



## Products Images



Western blot analysis of lysates from HpeG2 cells,  
primary antibody was diluted at 1:1000, 4° over night