



STX17 rabbit pAb

Catalog No	YP-Ab-09027
Isotype	IgG
Reactivity	Human; Mouse;Rat
Applications	WB
Gene Name	STX17
Protein Name	STX17
Immunogen	Synthesized peptide derived from human STX17 AA range: 30-80
Specificity	This antibody detects endogenous levels of STX17 at Human/Mouse/Rat
Formulation	Liquid in PBS containing 50% glycerol, 0.5% BSA and 0.02% sodium azide.
Source	Polyclonal, Rabbit,IgG
Purification	The antibody was affinity-purified from rabbit serum by affinity-chromatography using specific immunogen.
Dilution	WB 1: 500-2000
Concentration	1 mg/ml
Purity	≥90%
Storage Stability	-20°C/1 year
Synonyms	
Observed Band	
Cell Pathway	Endoplasmic reticulum membrane ; Multi-pass membrane protein . Smooth endoplasmic reticulum membrane ; Multi-pass membrane protein . Endoplasmic reticulum-Golgi intermediate compartment membrane ; Multi-pass membrane protein . Cytoplasmic vesicle, autophagosome membrane ; Multi-pass membrane protein . Cytoplasmic vesicle, COPII-coated vesicle membrane ; Multi-pass membrane protein . Cytoplasm, cytosol . Mitochondrion membrane ; Multi-pass membrane protein . Has a hairpin-like insertion into membranes. Localizes to the completed autophagosome membrane upon cell starvation (PubMed:23217709).
Tissue Specificity	
Function	function:Implicated in vesicle trafficking to lysosomes. Could be involved in processes related to cell division.,similarity:Belongs to the syntaxin family.,similarity:Contains 1 t-SNARE coiled-coil homology domain.,subcellular location:Appears to be associated with a membrane compartment, perhaps a subset of the ER such as exit or entrance sites.,
Background	



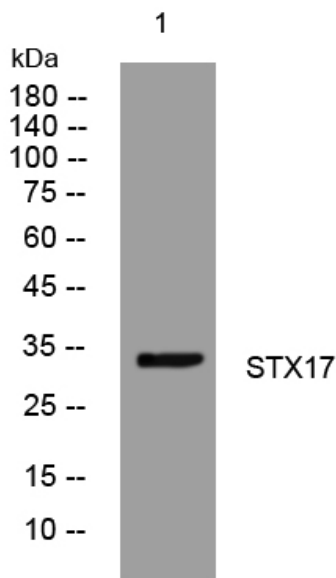
matters needing attention

Avoid repeated freezing and thawing!

Usage suggestions

This product can be used in immunological reaction related experiments. For more information, please consult technical personnel.

Products Images



Western blot analysis of lysates from Jarkat cells, primary antibody was diluted at 1:1000, 4° over night