



## ZFY rabbit pAb

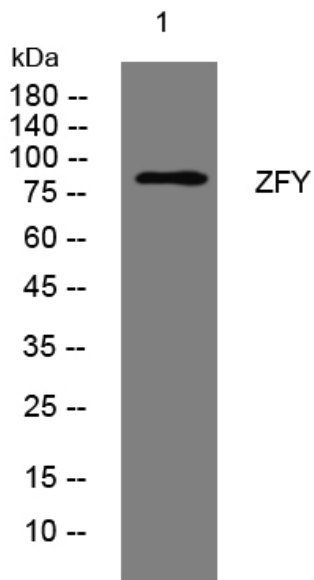
<b>Catalog No</b>	YP-Ab-09032
<b>Isotype</b>	IgG
<b>Reactivity</b>	Human;Rat;Mouse;
<b>Applications</b>	WB
<b>Gene Name</b>	ZFY
<b>Protein Name</b>	ZFY
<b>Immunogen</b>	Synthesized peptide derived from human ZFY AA range: 689-739
<b>Specificity</b>	This antibody detects endogenous levels of ZFY at Human
<b>Formulation</b>	Liquid in PBS containing 50% glycerol, 0.5% BSA and 0.02% sodium azide.
<b>Source</b>	Polyclonal, Rabbit,IgG
<b>Purification</b>	The antibody was affinity-purified from rabbit serum by affinity-chromatography using specific immunogen.
<b>Dilution</b>	WB 1: 500-2000
<b>Concentration</b>	1 mg/ml
<b>Purity</b>	≥90%
<b>Storage Stability</b>	-20°C/1 year
<b>Synonyms</b>	
<b>Observed Band</b>	
<b>Cell Pathway</b>	Nucleus.
<b>Tissue Specificity</b>	
<b>Function</b>	caution:Was originally thought to be the testis determining factor (TDF).,function:Probable transcriptional activator.,similarity:Belongs to the krueppel C2H2-type zinc-finger protein family. ZFX/ZFY subfamily.,similarity:Contains 13 C2H2-type zinc fingers.,
<b>Background</b>	This gene encodes a zinc finger-containing protein that may function as a transcription factor. This gene was once a candidate gene for the testis-determining factor (TDF) and was erroneously referred to as TDF. [provided by RefSeq, Jul 2008],
<b>matters needing attention</b>	Avoid repeated freezing and thawing!



### Usage suggestions

This product can be used in immunological reaction related experiments. For more information, please consult technical personnel.

## Products Images



Western blot analysis of lysates from VEC cells,  
primary antibody was diluted at 1:1000, 4°over night