



MPV17 rabbit pAb

Catalog No	YP-Ab-09043
Isotype	IgG
Reactivity	Human; Mouse;Rat
Applications	WB
Gene Name	MPV17
Protein Name	MPV17
Immunogen	Synthesized peptide derived from human MPV17 AA range: 45-95
Specificity	This antibody detects endogenous levels of MPV17 at Human/Mouse/Rat
Formulation	Liquid in PBS containing 50% glycerol, 0.5% BSA and 0.02% sodium azide.
Source	Polyclonal, Rabbit,IgG
Purification	The antibody was affinity-purified from rabbit serum by affinity-chromatography using specific immunogen.
Dilution	WB 1: 500-2000
Concentration	1 mg/ml
Purity	≥90%
Storage Stability	-20°C/1 year
Synonyms	
Observed Band	
Cell Pathway	Mitochondrion inner membrane ; Multi-pass membrane protein .
Tissue Specificity	Ubiquitous. Expressed in pancreas, kidney, muscle, liver, lung, placenta, brain and heart.
Function	disease:Defects in MPV17 are a cause of hepatocerebral mitochondrial DNA depletion syndrome (MDS) [MIM:251880]. MDS is a clinically heterogeneous group of disorders characterized by a reduction in mitochondrial DNA (mtDNA) copy number. Primary mtDNA depletion is inherited as an autosomal recessive trait and may affect single organs, typically muscle or liver, or multiple tissues. Individuals with the hepatocerebral form of mitochondrial DNA depletion syndrome have early progressive liver failure and neurologic abnormalities, hypoglycemia, and increased lactate in body fluids.,disease:Defects in MPV17 are the cause of Navajo neurohepatopathy (NN) [MIM:256810]. NN is an autosomal recessive disease that is prevalent among Navajo children in the southwestern United States. The major clinical features are hepatopathy, peripheral neuropathy, corneal anesthesia and scarring, acral mutilation, c
Background	This gene encodes a mitochondrial inner membrane protein that is implicated in the metabolism of reactive oxygen species. Mutations in this gene have been associated with the hepatocerebral form of mitochondrial DNA depletion



syndrome (MDDS). [provided by RefSeq, Jul 2008],

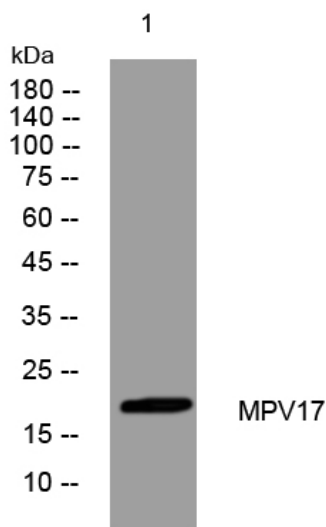
matters needing attention

Avoid repeated freezing and thawing!

Usage suggestions

This product can be used in immunological reaction related experiments. For more information, please consult technical personnel.

Products Images



Western blot analysis of lysates from HpeG2 cells, primary antibody was diluted at 1:1000, 4° over night