

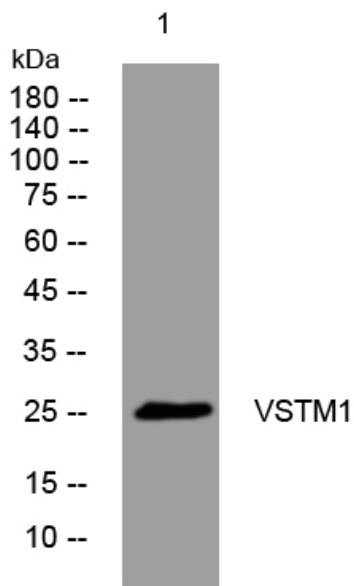


VSTM1 rabbit pAb

Catalog No	YP-Ab-09048
Isotype	IgG
Reactivity	Human;Rat;Mouse;
Applications	WB
Gene Name	VSTM1 UNQ3033/PRO9835
Protein Name	VSTM1
Immunogen	Synthesized peptide derived from human VSTM1 AA range: 170-220
Specificity	This antibody detects endogenous levels of VSTM1 at Human
Formulation	Liquid in PBS containing 50% glycerol, 0.5% BSA and 0.02% sodium azide.
Source	Polyclonal, Rabbit,IgG
Purification	The antibody was affinity-purified from rabbit serum by affinity-chromatography using specific immunogen.
Dilution	WB 1: 500-2000
Concentration	1 mg/ml
Purity	≥90%
Storage Stability	-20°C/1 year
Synonyms	
Observed Band	
Cell Pathway	[Isoform 1]: Membrane ; Single-pass membrane protein .; [Isoform 2]: Secreted .
Tissue Specificity	Expressed on myeloid (neutrophils, eosinophils and monocytes) but not on lymphoid cells.
Function	similarity:Contains 1 Ig-like V-type (immunoglobulin-like) domain.,
Background	
matters needing attention	Avoid repeated freezing and thawing!
Usage suggestions	This product can be used in immunological reaction related experiments. For more information, please consult technical personnel.



Products Images



Western blot analysis of lysates from SW480 cells,
primary antibody was diluted at 1:1000, 4° over night