



RSPO4 rabbit pAb

Catalog No	YP-Ab-09062
Isotype	IgG
Reactivity	Human; Mouse
Applications	WB
Gene Name	RSPO4 C20orf182
Protein Name	RSPO4
Immunogen	Synthesized peptide derived from human RSPO4 AA range: 43-93
Specificity	This antibody detects endogenous levels of RSPO4 at Human/Mouse
Formulation	Liquid in PBS containing 50% glycerol, 0.5% BSA and 0.02% sodium azide.
Source	Polyclonal, Rabbit,IgG
Purification	The antibody was affinity-purified from rabbit serum by affinity-chromatography using specific immunogen.
Dilution	WB 1: 500-2000
Concentration	1 mg/ml
Purity	≥90%
Storage Stability	-20°C/1 year
Synonyms	
Observed Band	
Cell Pathway	Secreted .
Tissue Specificity	
Function	disease:Defects in RSPO4 are the cause of anonychia [MIM:206800]. This is a rare autosomal recessive conditions in which the only presenting phenotype is the absence or severe hypoplasia of all fingernails and toenails.,domain:The FU repeat is required for activation and stabilization of beta-catenin.,function:Activator of the beta-catenin signaling cascade, leading to TCF-dependent gene activation. Acts both in the canonical Wnt/beta-catenin-dependent pathway, possibly via a direct interaction with Wnt proteins, and in a Wnt-independent beta catenin pathway through a receptor signaling pathway that may not use frizzled/LRP receptors.,miscellaneous:Upon injection into mice, it induces rapid onset of crypt cell proliferation involving beta-catenin stabilization. It also displays efficacy in a model of chemotherapy-induced intestinal mucositis.,PTM:Tyr-112 may be phosphorylated; however as
Background	This gene encodes a member of the R-spondin family of proteins that share a common domain organization consisting of a signal peptide,



cysteine-rich/furin-like domain, thrombospondin domain and a C-terminal basic region. The encoded protein may be involved in activation of Wnt/beta-catenin signaling pathways. Mutations in this gene are associated with anonychia congenital. Alternate splicing results in multiple transcript variants.[provided by RefSeq, Sep 2009],

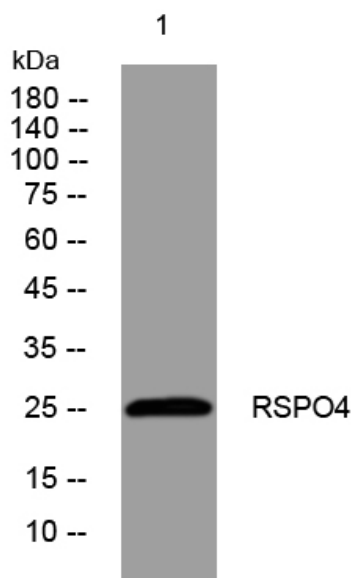
matters needing attention

Avoid repeated freezing and thawing!

Usage suggestions

This product can be used in immunological reaction related experiments. For more information, please consult technical personnel.

Products Images



Western blot analysis of lysates from KB cells, primary antibody was diluted at 1:1000, 4°over night