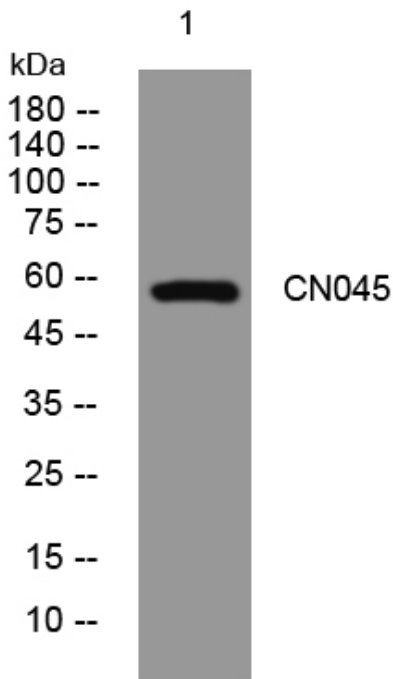


CN045 rabbit pAb

Catalog No	YP-Ab-09066
Isotype	IgG
Reactivity	Human;Rat;Mouse;
Applications	WB
Gene Name	C14orf45
Protein Name	CN045
Immunogen	Synthesized peptide derived from human CN045 AA range: 124-174
Specificity	This antibody detects endogenous levels of CN045 at Human
Formulation	Liquid in PBS containing 50% glycerol, 0.5% BSA and 0.02% sodium azide.
Source	Polyclonal, Rabbit,IgG
Purification	The antibody was affinity-purified from rabbit serum by affinity-chromatography using specific immunogen.
Dilution	WB 1: 500-2000
Concentration	1 mg/ml
Purity	≥90%
Storage Stability	-20°C/1 year
Synonyms	
Observed Band	
Cell Pathway	Cytoplasm, cytoskeleton, cilium basal body . Localizes to a polar structure adjacent to the basal body. .
Tissue Specificity	
Function	
Background	
matters needing attention	Avoid repeated freezing and thawing!
Usage suggestions	This product can be used in immunological reaction related experiments. For more information, please consult technical personnel.



Products Images



Western blot analysis of lysates from PC-12 cells,
primary antibody was diluted at 1:1000, 4° over night