



FTMT rabbit pAb

Catalog No	YP-Ab-09067
Isotype	IgG
Reactivity	Human; Mouse
Applications	WB
Gene Name	FTMT
Protein Name	FTMT
Immunogen	Synthesized peptide derived from human FTMT AA range: 129-179
Specificity	This antibody detects endogenous levels of FTMT at Human/Mouse
Formulation	Liquid in PBS containing 50% glycerol, 0.5% BSA and 0.02% sodium azide.
Source	Polyclonal, Rabbit,IgG
Purification	The antibody was affinity-purified from rabbit serum by affinity-chromatography using specific immunogen.
Dilution	WB 1: 500-2000
Concentration	1 mg/ml
Purity	≥90%
Storage Stability	-20°C/1 year
Synonyms	
Observed Band	
Cell Pathway	Mitochondrion .
Tissue Specificity	Detected in testis and erythroleukemia. Expression is very low or not detectable in brain, colon, heart, kidney, liver, lung, muscle, placental, spleen and small intestine.
Function	catalytic activity:4 Fe(2+) + 4 H(+) + O(2) = 4 Fe(3+) + 2 H(2)O.,function:Stores iron in a soluble, non-toxic, readily available form. Important for iron homeostasis. Has ferroxidase activity. Iron is taken up in the ferrous form and deposited as ferric hydroxides after oxidation.,online information:Ferritin entry,similarity:Belongs to the ferritin family.,similarity:Contains 1 ferritin-like diiron domain.,subunit:Homo-oligomer of 24 subunits. The functional molecule is roughly spherical and contains a central cavity into which the polymeric mineral iron core is deposited.,tissue specificity:Detected in testis and erythroleukemia. Expression is very low or not detectable in brain, colon, heart, kidney, liver, lung, muscle, placental, spleen and small intestine.,
Background	



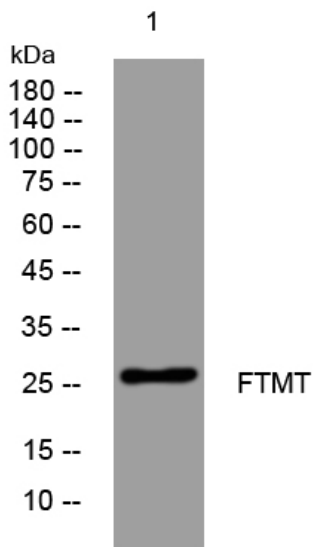
matters needing attention

Avoid repeated freezing and thawing!

Usage suggestions

This product can be used in immunological reaction related experiments. For more information, please consult technical personnel.

Products Images



Western blot analysis of lysates from VEC cells, primary antibody was diluted at 1:1000, 4° over night