



EXOS2 rabbit pAb

Catalog No	YP-Ab-09070
Isotype	IgG
Reactivity	Human; Mouse
Applications	WB
Gene Name	EXOSC2 RRP4
Protein Name	EXOS2
Immunogen	Synthesized peptide derived from human EXOS2 AA range: 90-140
Specificity	This antibody detects endogenous levels of EXOS2 at Human/Mouse
Formulation	Liquid in PBS containing 50% glycerol, 0.5% BSA and 0.02% sodium azide.
Source	Polyclonal, Rabbit,IgG
Purification	The antibody was affinity-purified from rabbit serum by affinity-chromatography using specific immunogen.
Dilution	WB 1: 500-2000
Concentration	1 mg/ml
Purity	≥90%
Storage Stability	-20°C/1 year
Synonyms	
Observed Band	
Cell Pathway	Cytoplasm. Nucleus, nucleolus. Nucleus.
Tissue Specificity	
Function	function:Component of the exosome 3'->5' exoribonuclease complex, a complex that degrades inherently unstable mRNAs containing AU-rich elements (AREs) within their 3' untranslated regions. Required for the 3' processing of the 7S pre-rRNA to the mature 5.8S rRNA. Has a 3'-5' exonuclease activity.,similarity:Contains 1 S1 motif domain.,subunit:Component of the exosome multienzyme ribonuclease complex composed of at least 11 proteins: EXOSC1/CSL4, EXOSC2/RRP4, EXOSC3/RRP40, EXOSC4/RRP41, EXOSC5/RRP46, EXOSC6/MTR3, EXOSC7/RRP42, EXOSC8/RRP43, EXOSC9/Sc1-75, DIS3/RRP44, and EXOSC10/Sc1-100 (only in the nuclear complex). Found in a mRNA decay complex with RENT1, RENT2 and RENT3B. Also associated with the GTPase Ran.,
Background	



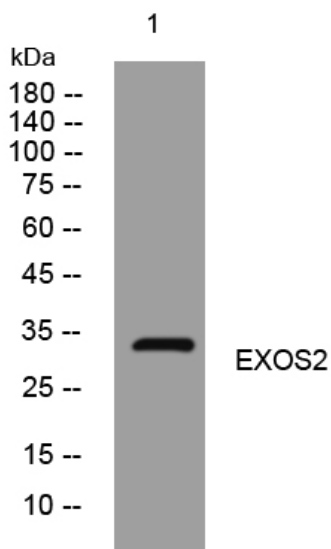
matters needing attention

Avoid repeated freezing and thawing!

Usage suggestions

This product can be used in immunological reaction related experiments. For more information, please consult technical personnel.

Products Images



Western blot analysis of lysates from MCF-7 cells, primary antibody was diluted at 1:1000, 4° over night