



## ZN260 rabbit pAb

<b>Catalog No</b>	YP-Ab-09079
<b>Isotype</b>	IgG
<b>Reactivity</b>	Human; Mouse;Rat
<b>Applications</b>	WB
<b>Gene Name</b>	ZNF260 ZFP260
<b>Protein Name</b>	ZN260
<b>Immunogen</b>	Synthesized peptide derived from human ZN260 AA range: 64-114
<b>Specificity</b>	This antibody detects endogenous levels of ZN260 at Human/Mouse/Rat
<b>Formulation</b>	Liquid in PBS containing 50% glycerol, 0.5% BSA and 0.02% sodium azide.
<b>Source</b>	Polyclonal, Rabbit,IgG
<b>Purification</b>	The antibody was affinity-purified from rabbit serum by affinity-chromatography using specific immunogen.
<b>Dilution</b>	WB 1: 500-2000
<b>Concentration</b>	1 mg/ml
<b>Purity</b>	≥90%
<b>Storage Stability</b>	-20°C/1 year
<b>Synonyms</b>	
<b>Observed Band</b>	
<b>Cell Pathway</b>	Nucleus .
<b>Tissue Specificity</b>	
<b>Function</b>	caution:It is uncertain whether Met-1 or Met-4 is the initiator.,function:Transcription factor that acts as a cardiac regulator and an effector of alpha1-adrenergic signaling. Binds to PE response elements (PERE) present in the promoter of genes such as ANF/NPPA and acts as a direct transcriptional activator of NPPA. Also acts as a cofactor with GATA4, a key cardiac regulator.,induction:Up-regulated by activation of alpha1-adrenergic receptors.,similarity:Belongs to the krueppel C2H2-type zinc-finger protein family.,similarity:Contains 13 C2H2-type zinc fingers.,subunit:Binds DNA. Interacts with GATA4.,
<b>Background</b>	



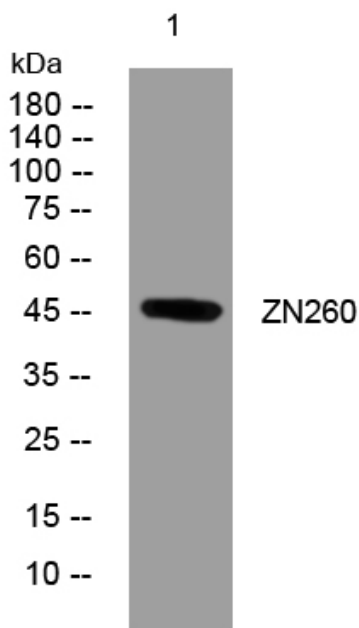
**matters needing attention**

Avoid repeated freezing and thawing!

**Usage suggestions**

This product can be used in immunological reaction related experiments. For more information, please consult technical personnel.

**Products Images**



Western blot analysis of lysates from 293T cells, primary antibody was diluted at 1:1000, 4° over night