

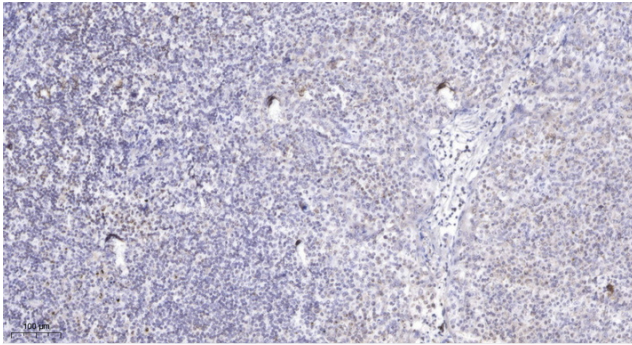


APM2 rabbit pAb

Catalog No	YP-Ab-09081
Isotype	IgG
Reactivity	Human;Rat;Mouse;
Applications	IHC;IF
Gene Name	APM2 C10orf116
Protein Name	APM2
Immunogen	Synthesized peptide derived from human APM2 AA range: 25-75
Specificity	This antibody detects endogenous levels of APM2 at Human
Formulation	Liquid in PBS containing 50% glycerol, 0.5% BSA and 0.02% sodium azide.
Source	Polyclonal, Rabbit,IgG
Purification	The antibody was affinity-purified from rabbit serum by affinity-chromatography using specific immunogen.
Dilution	IHC-p 1: 50-200. IF 1:50-200
Concentration	1 mg/ml
Purity	≥90%
Storage Stability	-20°C/1 year
Synonyms	
Observed Band	
Cell Pathway	Nucleus .
Tissue Specificity	Expressed in adipose tissue (at protein level). Highly expressed in omental and subcutaneous adipose tissues. Expressed in heart, cornea, liver, kidney and spleen.
Function	tissue specificity:Expressed in adipose tissue, cornea and liver.,
Background	APM2 gene is exclusively expressed in adipose tissue. Its function is currently unknown. [provided by RefSeq, Jul 2008],
matters needing attention	Avoid repeated freezing and thawing!
Usage suggestions	This product can be used in immunological reaction related experiments. For more information, please consult technical personnel.



Products Images



Immunohistochemical analysis of paraffin-embedded human tonsil. 1, Antibody was diluted at 1:200(4° overnight). 2, Tris-EDTA,pH9.0 was used for antigen retrieval. 3,Secondary antibody was diluted at 1:200(room temperature, 45min).